

WANT MONTENAPOLEONE VIN

حياة مستوحاة من أحدث الصيحات
A fashion-inspired living experience

حياة مستوحاة من أحدث الصيحات

من إيطاليا إليك

مجمع فريد من نوعه مستوحى من التصميم العصرية
في شارع مونتي نابوليوني في مدينة ميلانو في إيطاليا
ستكتشف في مونتي نابوليوني المعنى الجديد للفخامة
التي تدوم طوال الحياة.

A fashion-inspired living experience

All the way from Italy

A one of its kind community inspired by Italy's original home of
upscale fashion, the street of Montenapoleone in Milan.
At Montenapoleone you will experience a new definition to the
meaning of luxury that will last for a lifetime

Montenapoleone Phase 1

Each Residential Building Consists of:

Levels: B + GF + 6 + R
Total Height: 22.4m

Unit Features:

- Kitchen cabinets and countertops
- Balconies and Terraces as per unit plan
- Dedicated Parking Areas
- Fully tiled bathrooms, in-suites and guest toilets, wherever applicable
- fibre optics for high-speed internet connection
- Split Air Conditioning
- Shower or Bathtub with handle in each bathroom

Amenities & Services:

- 2 Swimming Pools for Men and Women
- 2 GYM's for Men and Women
- 2 Kids Pools
- Private Terrace & Balcony with various sizes
- Children Playgrounds

Unit Areas:

- Junior 1Bed: Area between 53sq.m to 58sq.m
- 1Bed: Area 68sq.m
- 2Bed: Area between 75sq.m to 92sq.m
- 3Bed: Area between 82sq.m to 119sq.m
- 1Bed Duplex: Area between 107sq.m to 162sq.m
- 2Bed Duplex: Area between 114sq.m to 168sq.m
- 3Bed Duplex: Area between 132sq.m to 264sq.m
- 4Bed Duplex: Area 251sq.m

Unit Mix:

- Junior 1 Bed: 18
- 1Bed: 6
- 2Bed: 18
- 3Bed: 18
- 1Bed Duplex: 8
- 2Bed Duplex: 11
- 3Bed Duplex: 27
- 4Bed Duplex: 2

Each Townhouse Consists of:

Levels: G + 2 + R
Total Height: 9.6m

Unit Features:

- Kitchen cabinets and countertops
- Balconies and Terraces as per unit plan
- Built-in wardrobes in bedrooms
- Fully tiled bathrooms, in-suites and guest toilets, wherever applicable
- fibre optics for high-speed internet connection
- Split Air Conditioning
- Shower or Bathtub with handle in each bathroom

Amenities & Services:

- Private Front and Back Yards
- Dedicated Parking Areas
- Private Terrace & Balcony

Unit Areas:

- 3Bed Townhouse: 218sq.m
- 4Bed Townhouse: 218sq.m

Unit Mix: Total 391

- 3Bed Townhouse: 180
- 4Bed Townhouse: 211

Montenapoleone Community:

Amenities & Services:

- Clubhouse
- Restaurants
- Cigar Club
- Swimming Pool
- Community GYM
- Squash Courts
- Football Courts
- Tennis Court
- Mosque
- School
- Shopping Centre
- Sports Complex
- Pharmacy
- Retail Stores
- Parks and Playgrounds
- 74% Green & Open Spaces

Unit Mix: Total 1309

- Townhouses: 391
- Residential Buildings: 9
- Total Residential Apartments: 918



مونتي نابليون المرحلة 1

مونتي نابوليوني: وحدات التاون هاوس

عدد الطوابق: طابق أرضي + 2 + روف
إجمالي الارتفاع: 9.6 متر

مواصفات الوحدات:

- خزانات مطبخ و أسطح طعام
- بلكونات و تراسات حسب التصميم
- خزائن مدمجة بغرف النوم
- حمامات مكسوة بالكامل: حمامات داخلية و حمامات ضيوف حيثما كان متاحا
- ألياف ضوئية لسرعة إنترنت عالية
- تكييف هواء منفصل
- أحواض استحمام و دش بمقبض بكل حمام

المرافق و الخدمات:

- فناء أمامي وخلفي
- مواقف سيارات مخصصة
- بلكونة و تراس خاص

مساحات الوحدات:

- تاون هاوس - 3 غرف: 218 متر مربع
- تاون هاوس - 4 غرف: 218 متر مربع

مزيج الوحدات: إجمالي العدد: 391 وحدة

- تاون هاوس - 3 غرف: 180
- تاون هاوس - 4 غرف: 211

مجمع مونتي نابوبيوني:

المرافق و الخدمات:

- كلوب هاوس
- حمامات سباحة
- ملاعب كرة قدم
- مدرسة
- حدائق و ملاعب
- صيدلية
- مطاعم
- جيم
- ملعب تنس
- غرف للصلاة
- سيجار كلوب
- ملاعب سكواش
- مسجد
- مركز تجاري
- محلات تجارية

مزيج الوحدات: إجمالي العدد: 1309

- وحدات التاون هاوس: 391
- إجمالي عدد الشقق السكنية: 918
- المباني السكنية: 9

مونتي نابوليوني: المباني السكنية

عدد الطوابق: طابق سفلي + طابق أرضي + 6 + روف
إجمالي الارتفاع: 22.4 متر

مواصفات الوحدات:

- خزانات مطبخ و أسطح طعام
- بلكونات و تراسات حسب التصميم
- مواقف سيارات مخصصة
- حمامات مكسوة بالكامل: حمامات داخلية و حمامات ضيوف حيثما كان ممكنا
- ألياف ضوئية لسرعة إنترنت عالية
- تكييف هواء منفصل
- أحواض استحمام و دش بمقبض بكل حمام

المرافق و الخدمات:

- 2 حمام سباحة للرجال و السيدات
- 2 جيم للرجال و السيدات
- 2 حمام سباحة للأطفال
- بلكونات و تراسات خاصة بمساحات متنوعة
- ملاعب للأطفال

مساحات الوحدات:

- غرفة واحدة جونيور: بمساحة من 53 إلى 58 متر مربع
- غرفة واحدة: بمساحة 68 متر مربع
- غرفتين: بمساحة من 75 إلى 92 متر مربع
- 3 غرف: بمساحة من 82 إلى 119 متر مربع
- دوبلكس- غرفة واحدة: بمساحة من 107 إلى 162 متر مربع
- دوبلكس-غرفتين: بمساحة من 114 إلى 168 متر مربع
- لوفت- 3 غرف: بمساحة من 132 إلى 264 متر مربع
- لوفت- 4 غرف: بمساحة 251 متر مربع

مزيج الوحدات:

- غرفة واحدة جونيور: 18
- دوبلكس - غرفتين: 11
- دوبلكس - 3 غرف: 27
- دوبلكس - 4 غرف: 2
- دوبلكس- غرفة واحدة: 8
- دوبلكس - 3 غرف: 18
- دوبلكس - 4 غرف: 18



Rejuvenate at the pool with
a sky view and embrace the
beauty of blue

Dazzling designs and breath-taking landscape are complemented
with 2 Gyms, rooftop pools for adults and others for kids, nourish
your imagination with an unparalleled living experience and to
make everyday a special day to leave the world behind.

تكتمل روعة التصميم و المساحات الخضراء بوجود
عدد ٢ صالة ألعاب رياضية و حمامات سباحة للكبار و
غيرها للأطفال، لتنعش مخيلتك بحياة لا تضاهى و
تجعل كل يوم يوما مثاليا لتترك العالم وراءك

جدد نشاطك في المسبح مع
إطلالة على السماء واستمتع
بجمال اللون الأزرق



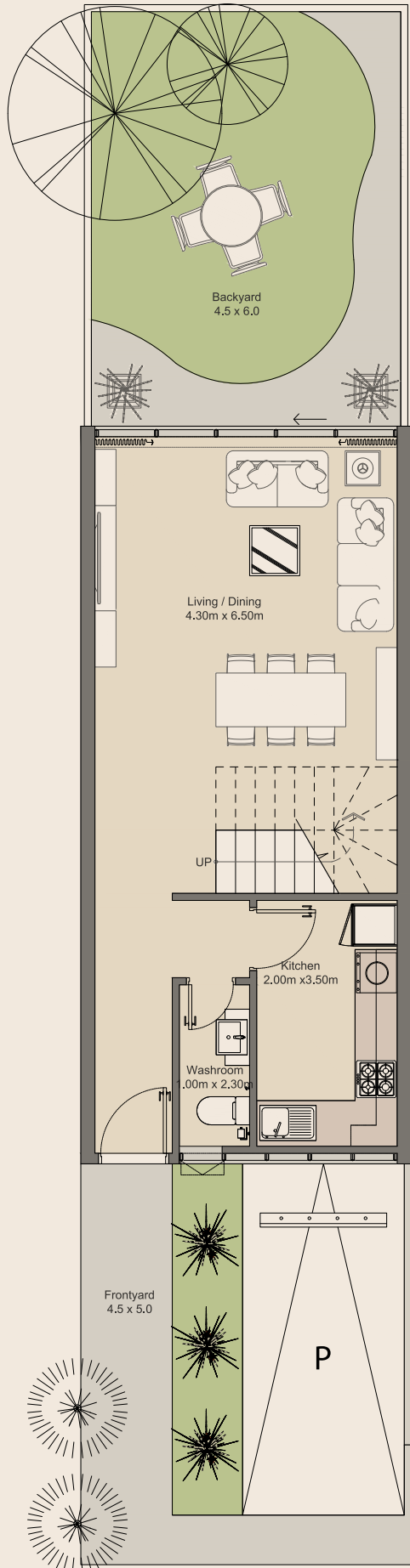


شقق وتاون هاوس بتصميم حديث

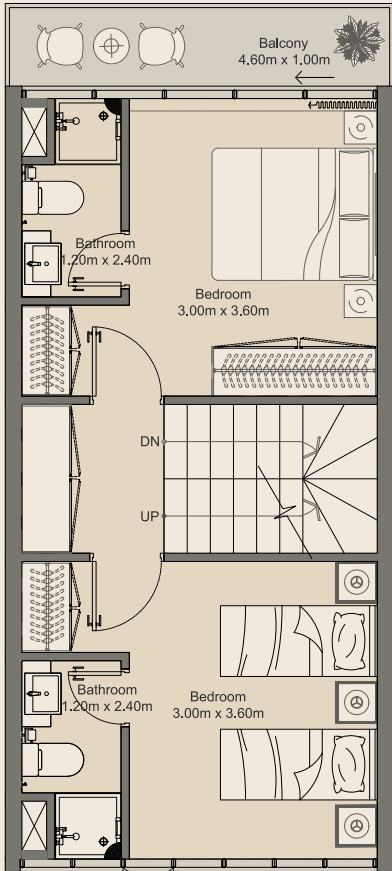
ويتكون مونتي نابوليوني من 9 مباني سكنية، بإجمالي 1309 شقة سكنية فردية و دوبلكس، بمساحات و تصميمات متنوعة ما بين غرفة واحدة و غرفتين و ثلاث غرف و أربع غرف نوم، في وسط حدائق ومرافق ترفيهية. وتقدم لك هذه الشقق ذات الطابع العالمي قيمة مذهشة. أما أفضل ما يميز المنازل في مونتي نابوليوني فهو ليس الرفاهية الاستثنائية التي توفرها لك فحسب، بل المساحات الخضراء الخلابة التي تحيط بالمنطقة أيضا.

Modern Apartments and Townhouses

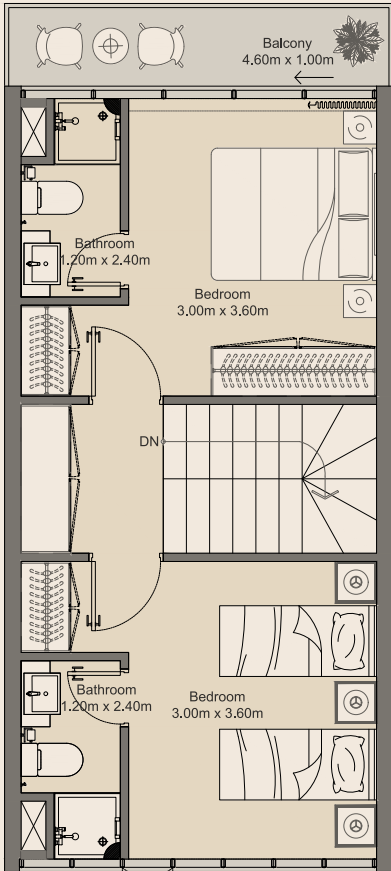
Montenapoleone comprises 9 apartment buildings with a total of 1,309 simplex and duplex residential apartments, offering 1, 2, 3 and 4 bedroom apartments. These world-class apartments offer immense value. The best part about homes at Montenapoleone is not only the exceptional luxury that it offers you, it's the enchanting greenery that surrounds the area.



Ground Floor



1st Floor

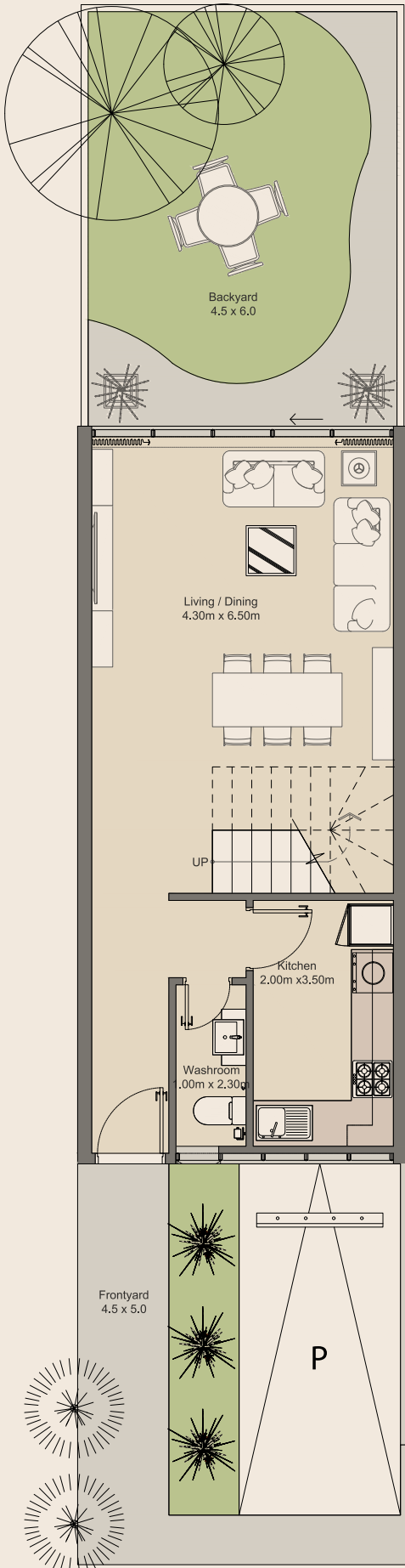


2nd Floor

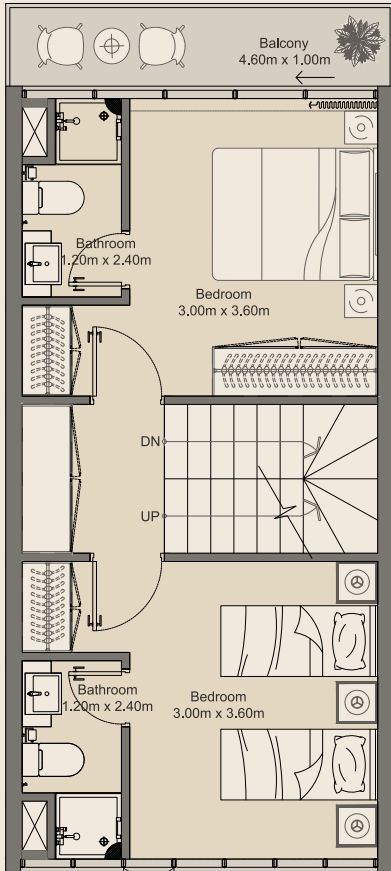
4BR | Type A

Townhouse Floor Plan

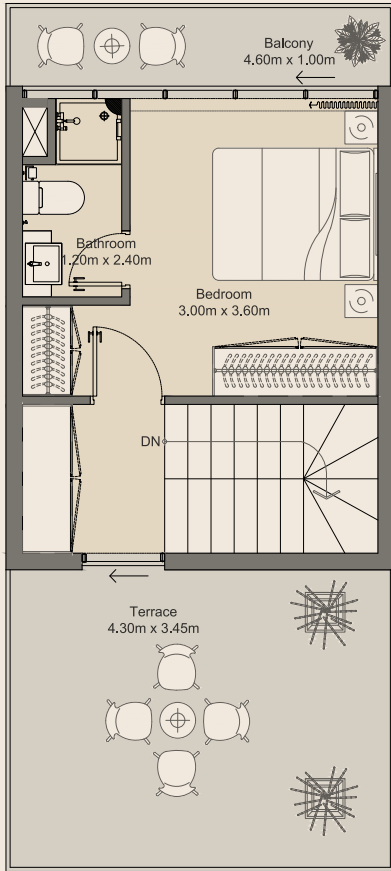
Internal Area	152 sq.m
External Area	66 sq.m
Total Area	218 sq.m



Ground Floor



1st Floor



2nd Floor

3BR | Type A

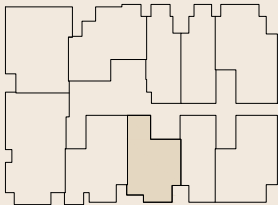
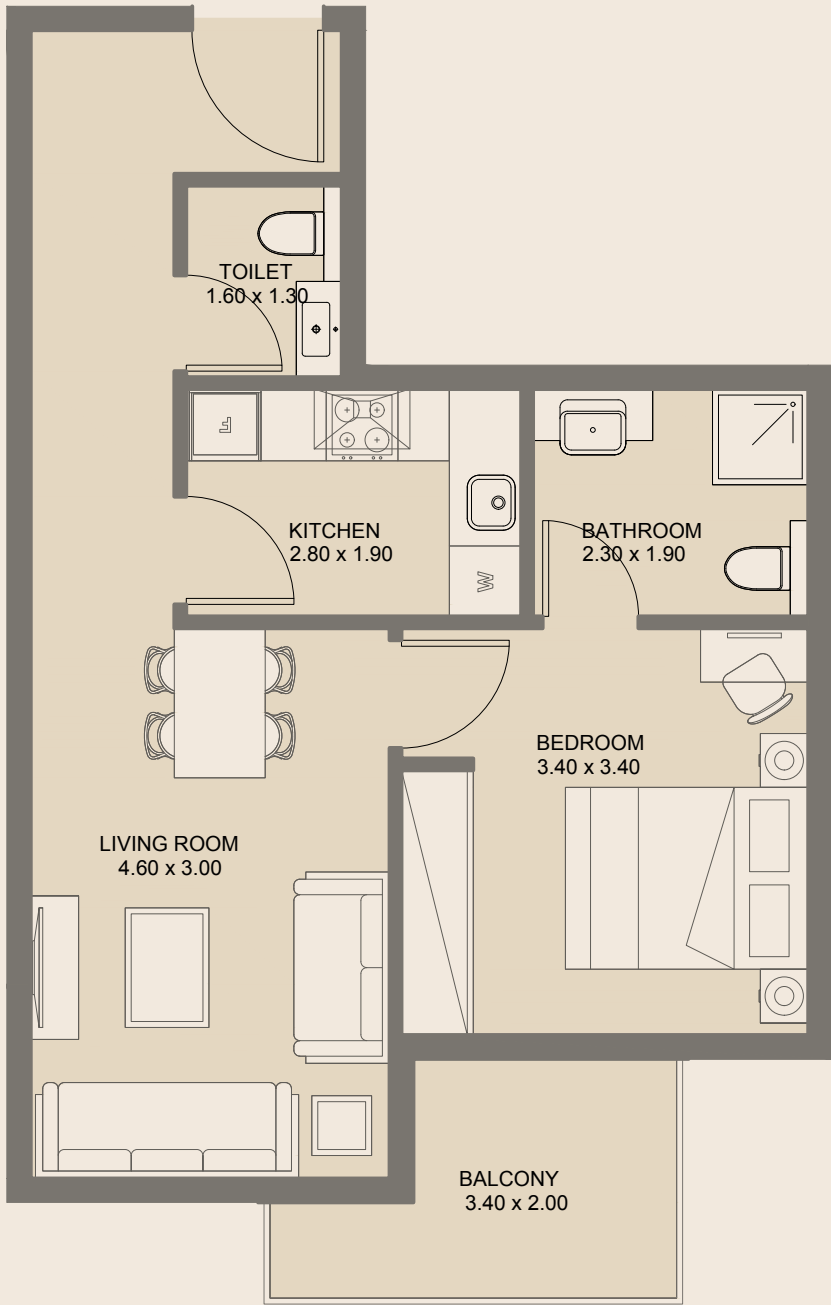
Townhouse Floor Plan

Internal Area	133 sq.m
External Area	85 sq.m
Total Area	218 sq.m

All drawings and dimensions are approximate. Drawings are not to scale and are subject to change without notice. The developer reserves the right to make revisions. The units are measured at typical floors in the building and columns may vary in size depending on the floor level. The furnishing and accessories shown are for representation only. The availability, length and width of the balcony varies depending on which floor and which orientation the unit is located within the building. There will be slight differences in the internal areas between the same unit types depending on the shaft sizes that go through the units.

All drawings and dimensions are approximate. Drawings are not to scale and are subject to change without notice. The developer reserves the right to make revisions. The units are measured at typical floors in the building and columns may vary in size depending on the floor level. The furnishing and accessories shown are for representation only. The availability, length and width of the balcony varies depending on which floor and which orientation the unit is located within the building. There will be slight differences in the internal areas between the same unit types depending on the shaft sizes that go through the units.

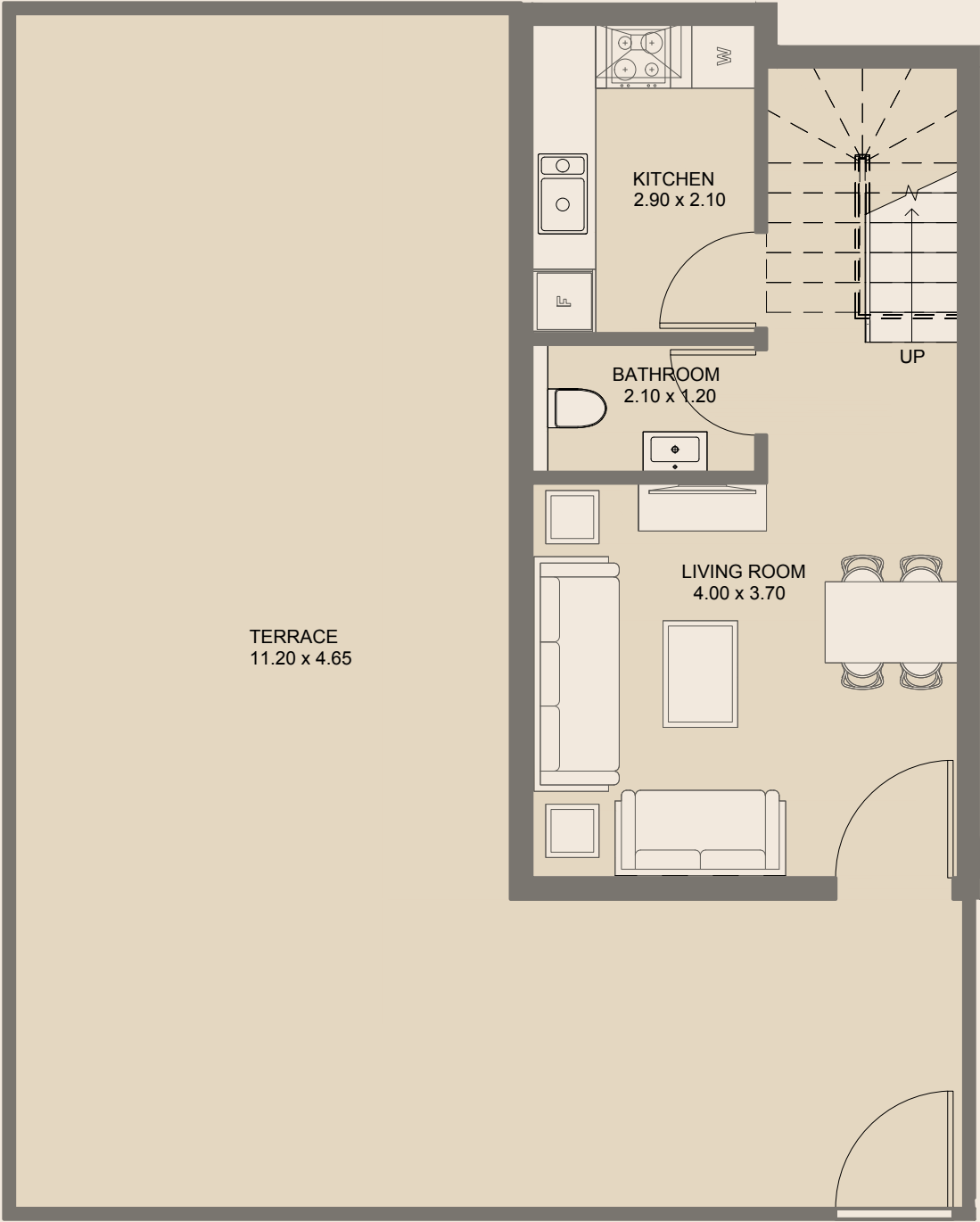




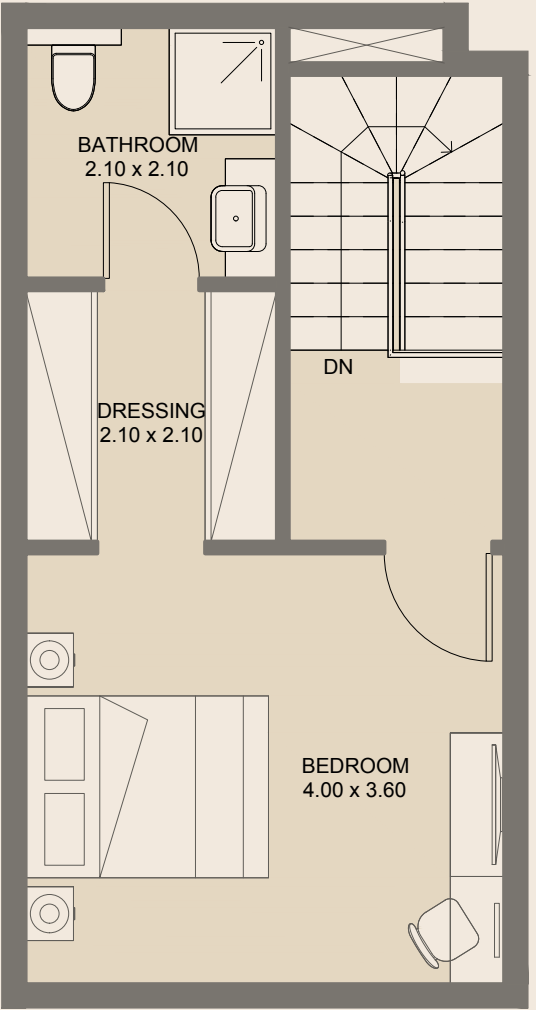
1BR | Type A

2nd, 3rd & 4th Floors

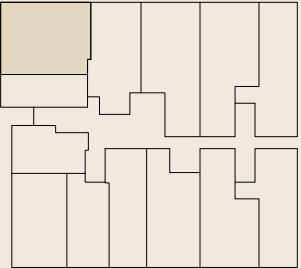
Internal Area	54.47 sq.m
External Area	6.43 sq.m
Total Area	60.90 sq.m



Lower Floor



Upper Floor



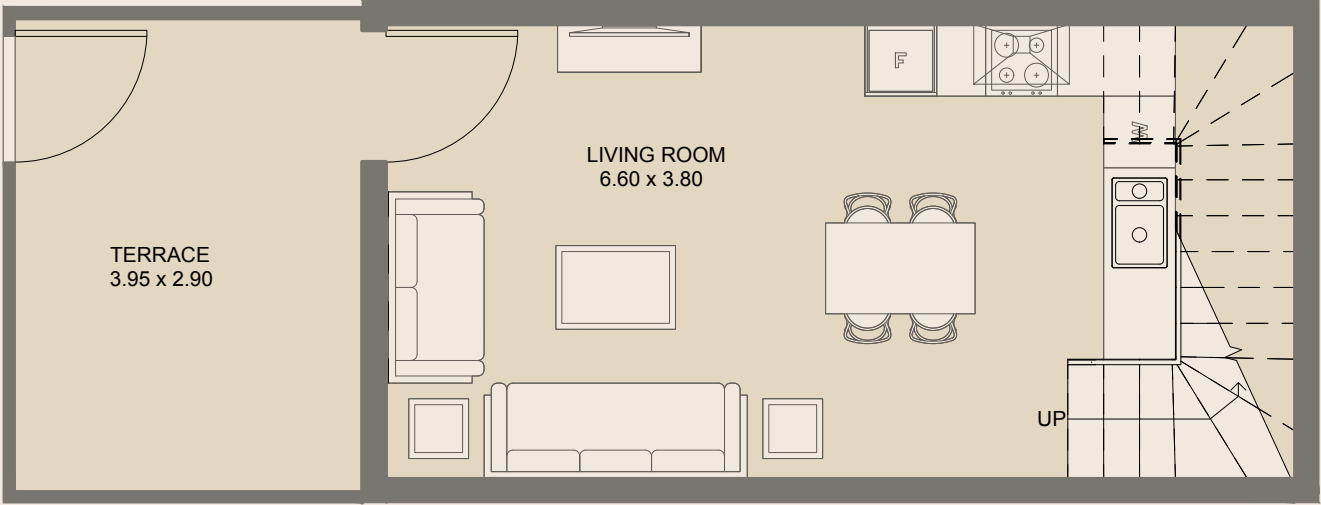
1BR - Duplex | Type A

Ground Floor

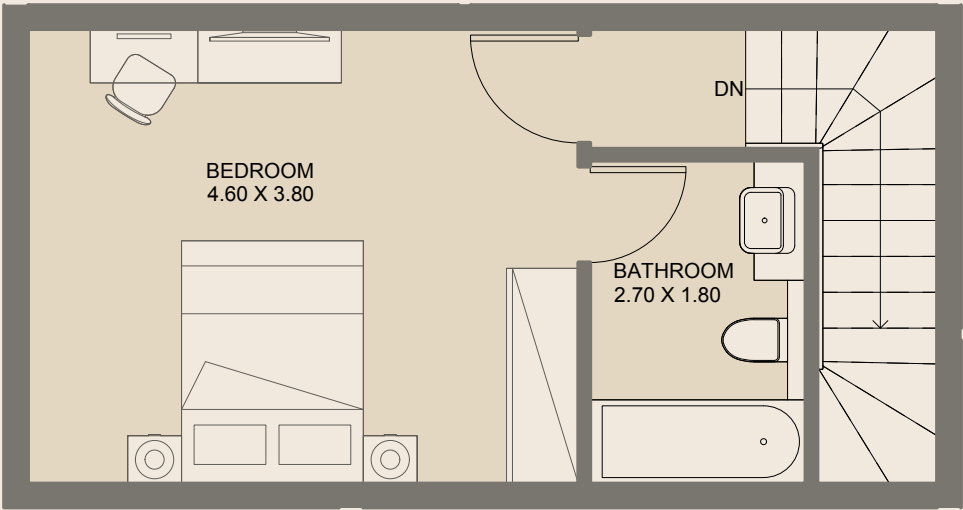
Internal Area	74.20 sq.m
External Area	77.29 sq.m
Total Area	151.49 sq.m

All drawings and dimensions are approximate. Drawings are not to scale and are subject to change without notice. The developer reserves the right to make revisions. The units are measured at typical floors in the building and columns may vary in size depending on the floor level. The furnishing and accessories shown are for representation only. The availability, length and width of the balcony varies depending on which floor and which orientation the unit is located within the building. There will be slight differences in the internal areas between the same unit types depending on the shaft sizes that go through the units.

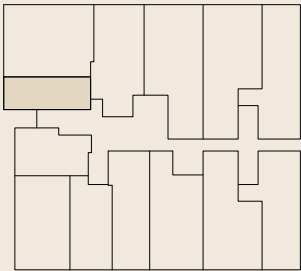
All drawings and dimensions are approximate. Drawings are not to scale and are subject to change without notice. The developer reserves the right to make revisions. The units are measured at typical floors in the building and columns may vary in size depending on the floor level. The furnishing and accessories shown are for representation only. The availability, length and width of the balcony varies depending on which floor and which orientation the unit is located within the building. There will be slight differences in the internal areas between the same unit types depending on the shaft sizes that go through the units.



Lower Floor



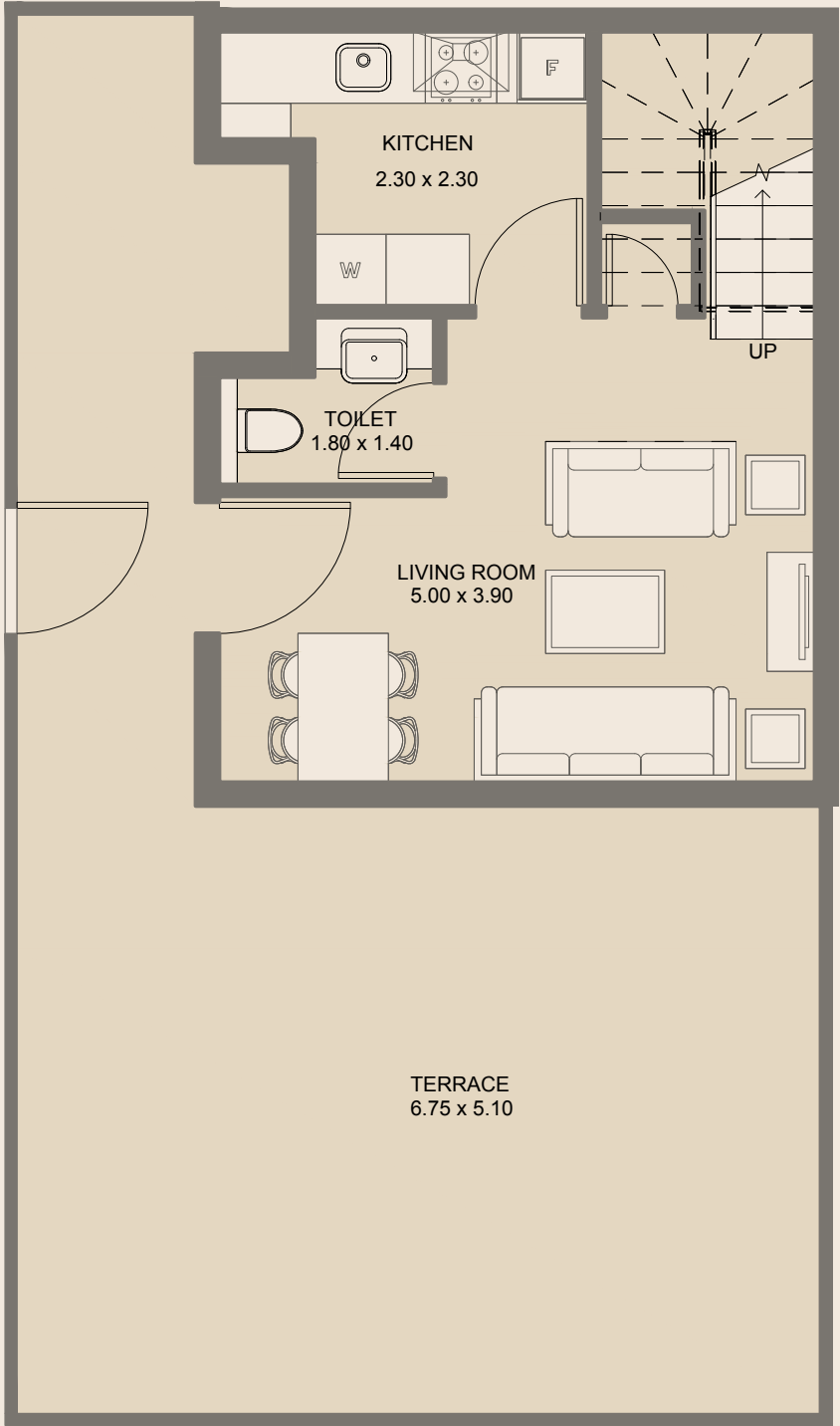
Upper Floor



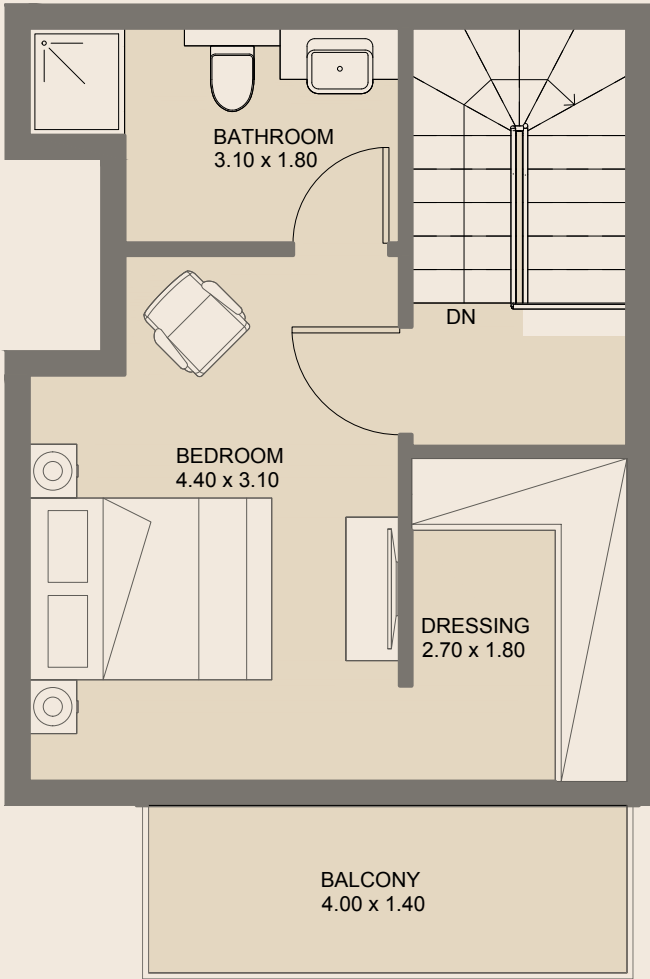
1BR - Duplex | Type B

Ground Floor	
Internal Area	69.31 sq.m
External Area	13.75 sq.m
Total Area	83.06 sq.m

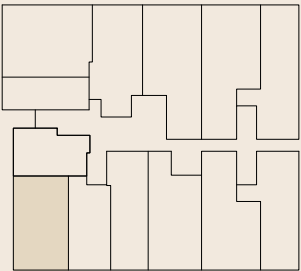
All drawings and dimensions are approximate. Drawings are not to scale and are subject to change without notice. The developer reserves the right to make revisions. The units are measured at typical floors in the building and columns may vary in size depending on the floor level. The furnishing and accessories shown are for representation only. The availability, length and width of the balcony varies depending on which floor and which orientation the unit is located within the building. There will be slight differences in the internal areas between the same unit types depending on the shaft sizes that go through the units.



Lower Floor



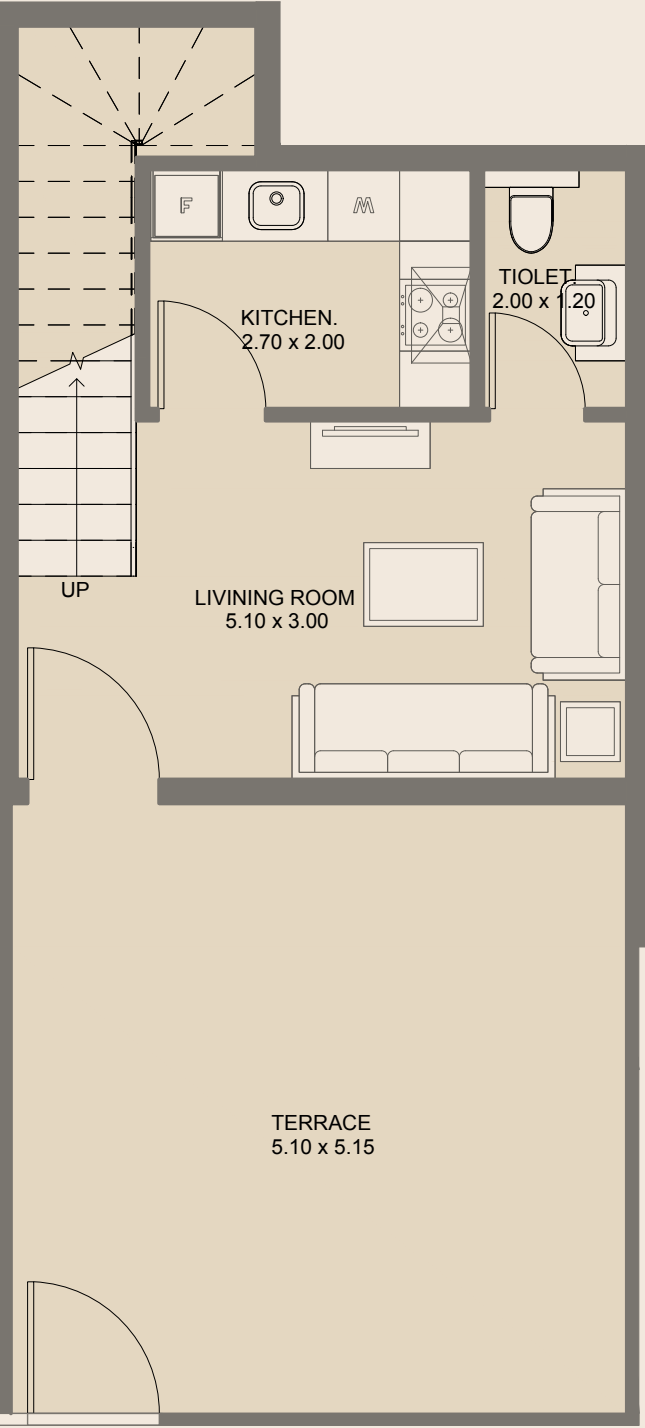
Upper Floor



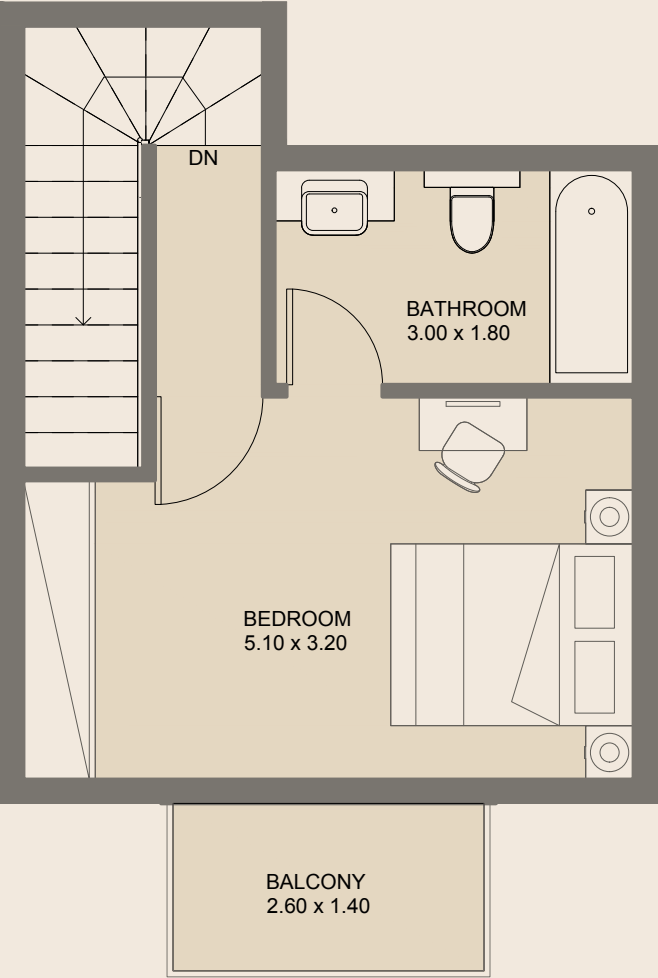
1BR - Duplex | Type C

Ground Floor	
Internal Area	71.06 sq.m
External Area	61.54 sq.m
Total Area	132.60 sq.m

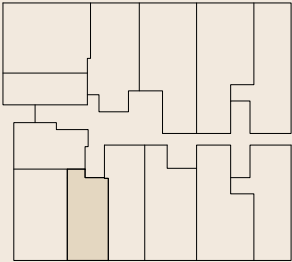
All drawings and dimensions are approximate. Drawings are not to scale and are subject to change without notice. The developer reserves the right to make revisions. The units are measured at typical floors in the building and columns may vary in size depending on the floor level. The furnishing and accessories shown are for representation only. The availability, length and width of the balcony varies depending on which floor and which orientation the unit is located within the building. There will be slight differences in the internal areas between the same unit types depending on the shaft sizes that go through the units.



Lower Floor



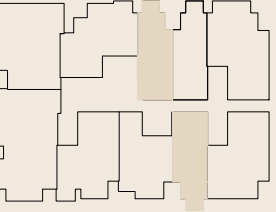
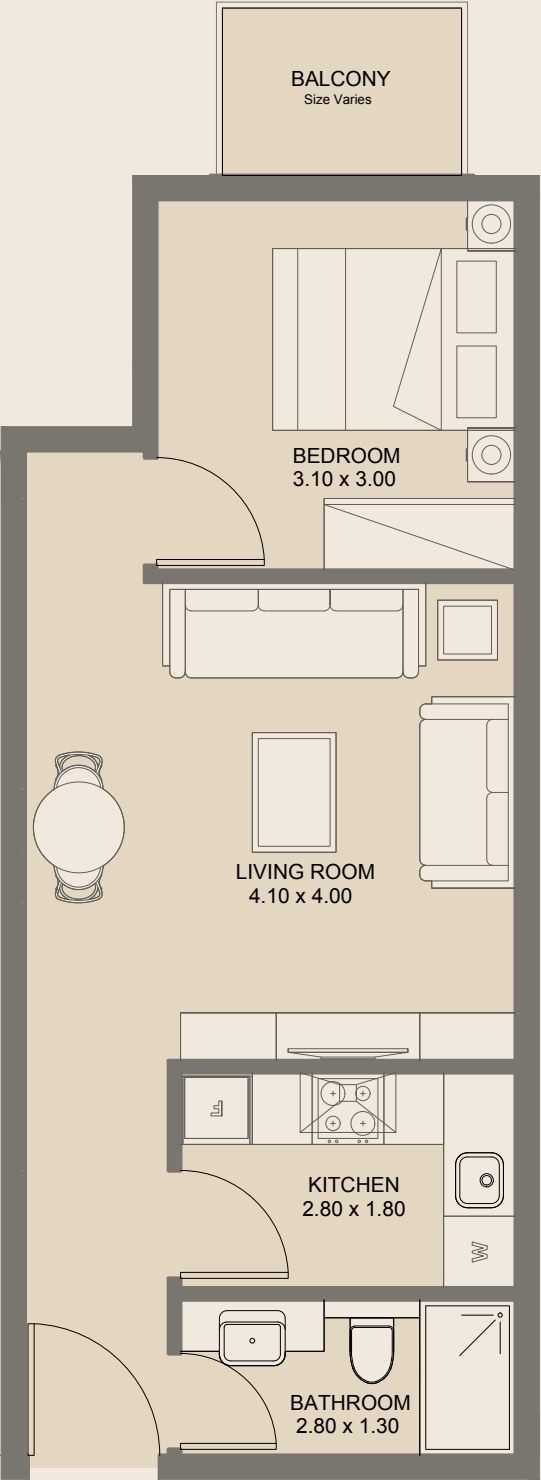
Upper Floor



1BR - Duplex | Type D

Ground Floor	
Internal Area	66.89 sq.m
External Area	35.89 sq.m
Total Area	102.78 sq.m

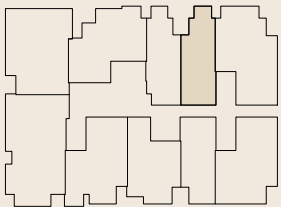
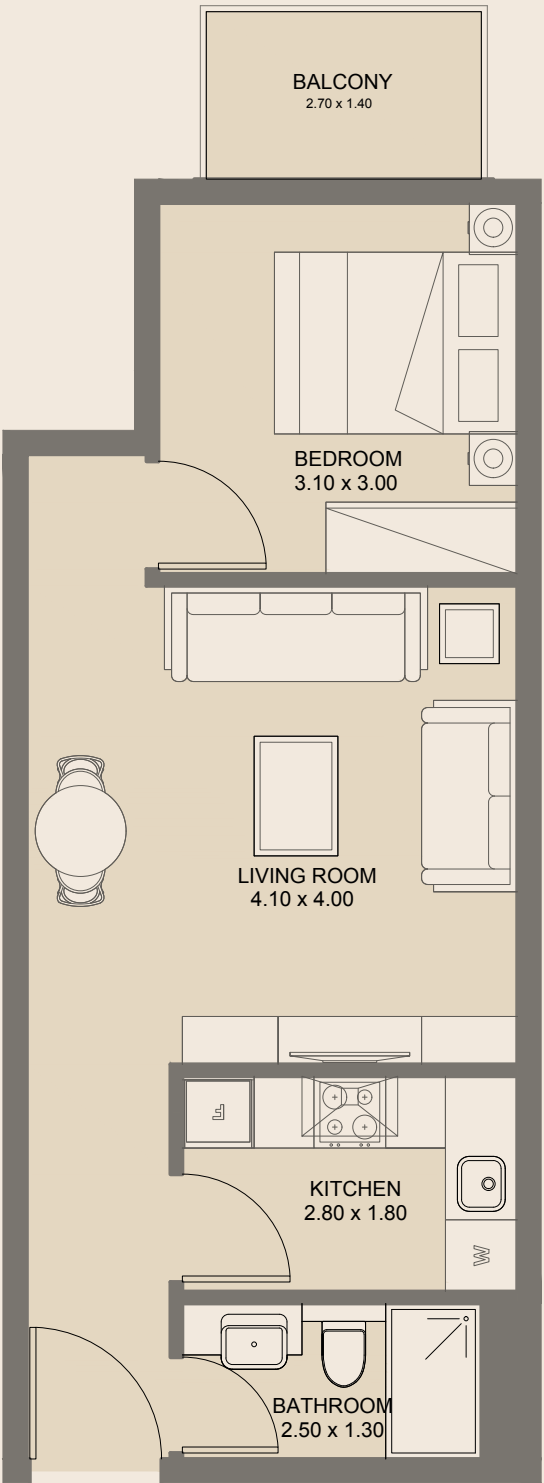
All drawings and dimensions are approximate. Drawings are not to scale and are subject to change without notice. The developer reserves the right to make revisions. The units are measured at typical floors in the building and columns may vary in size depending on the floor level. The furnishing and accessories shown are for representation only. The availability, length and width of the balcony varies depending on which floor and which orientation the unit is located within the building. There will be slight differences in the internal areas between the same unit types depending on the shaft sizes that go through the units.



Junior 1BR | Type A

2 nd , 3 rd & 4 th Floors	
Internal Area	48.76 sq.m
External Area	3.36 sq.m
Total Area	51.44 sq.m

All drawings and dimensions are approximate. Drawings are not to scale and are subject to change without notice. The developer reserves the right to make revisions. The units are measured at typical floors in the building and columns may vary in size depending on the floor level. The furnishing and accessories shown are for representation only. The availability, length and width of the balcony varies depending on which floor and which orientation the unit is located within the building. There will be slight differences in the internal areas between the same unit types depending on the shaft sizes that go through the units.

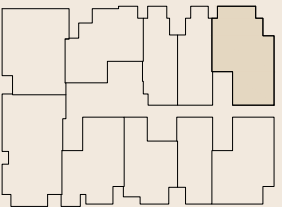
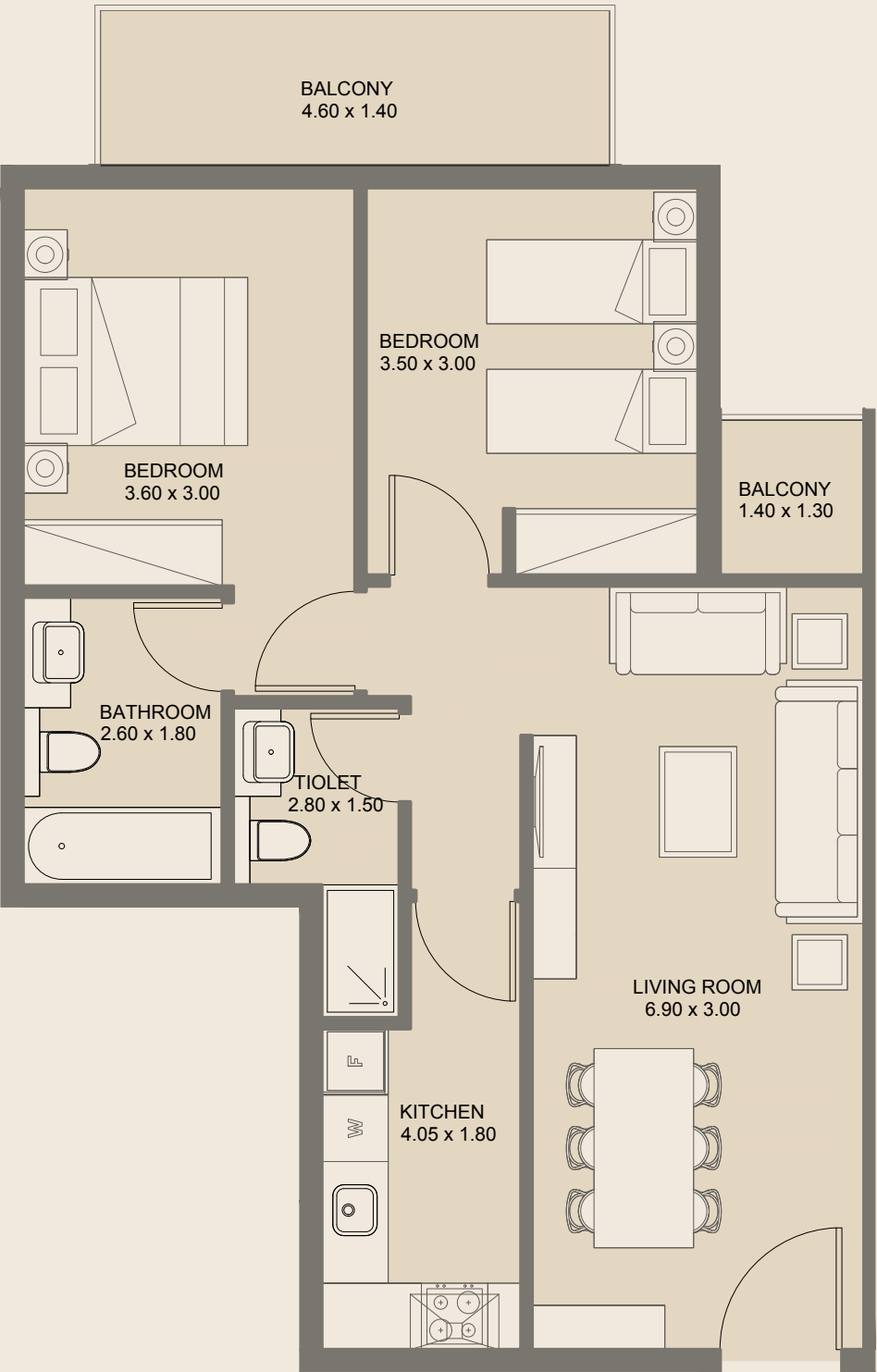


Junior 1BR | Type B

2nd, 3rd & 4th Floors

Internal Area	47.33 sq.m
External Area	3.70 sq.m
Total Area	51.03 sq.m

All drawings and dimensions are approximate. Drawings are not to scale and are subject to change without notice. The developer reserves the right to make revisions. The units are measured at typical floors in the building and columns may vary in size depending on the floor level. The furnishing and accessories shown are for representation only. The availability, length and width of the balcony varies depending on which floor and which orientation the unit is located within the building. There will be slight differences in the internal areas between the same unit types depending on the shaft sizes that go through the units.

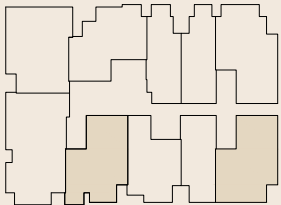
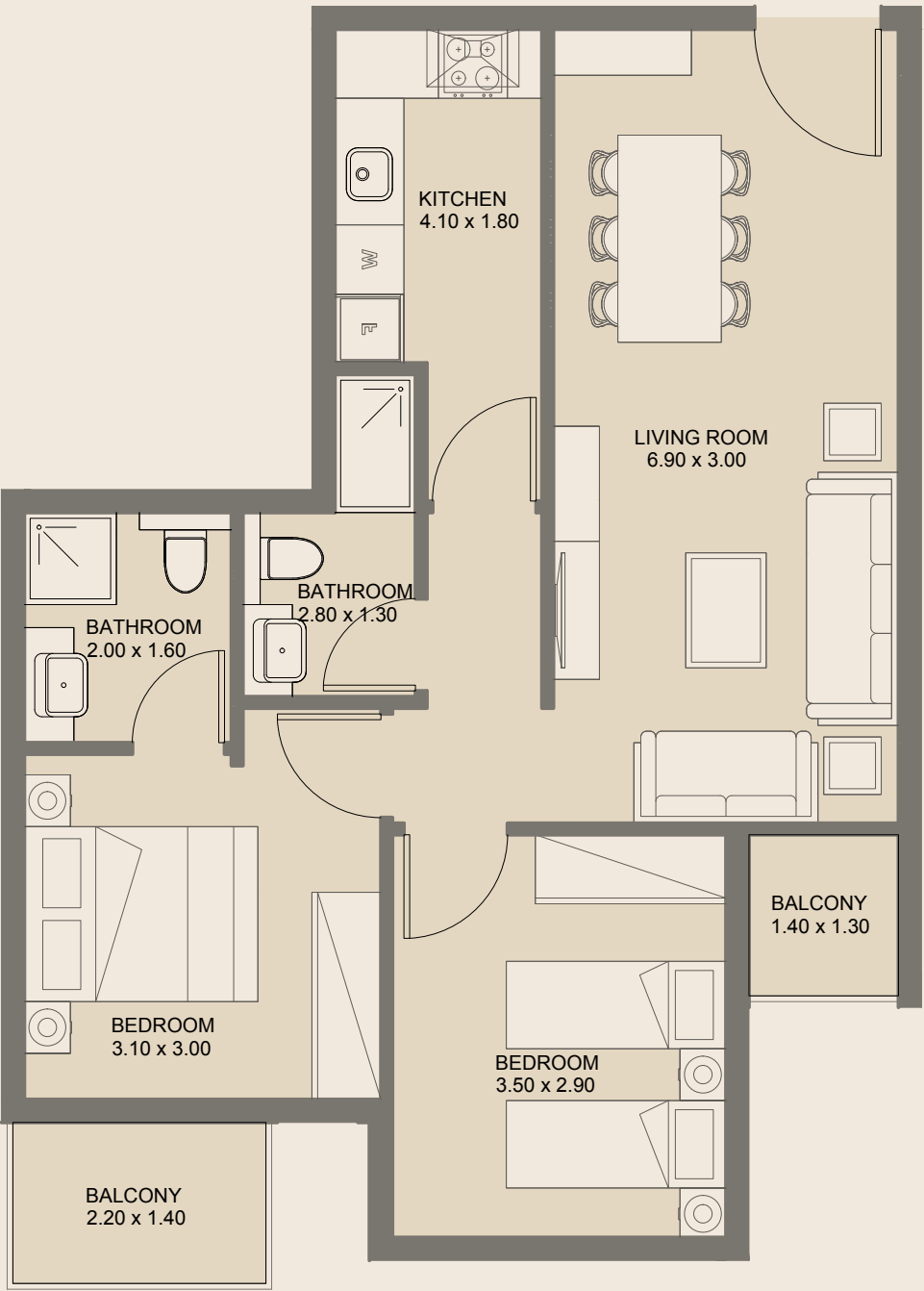


2BR | Type A

2nd, 3rd & 4th Floors

Internal Area	74.96 sq.m
External Area	9.91 sq.m
Total Area	84.87 sq.m

All drawings and dimensions are approximate. Drawings are not to scale and are subject to change without notice. The developer reserves the right to make revisions. The units are measured at typical floors in the building and columns may vary in size depending on the floor level. The furnishing and accessories shown are for representation only. The availability, length and width of the balcony varies depending on which floor and which orientation the unit is located within the building. There will be slight differences in the internal areas between the same unit types depending on the shaft sizes that go through the units.

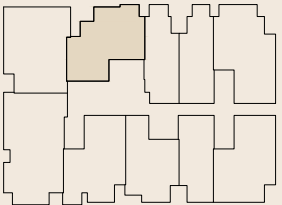
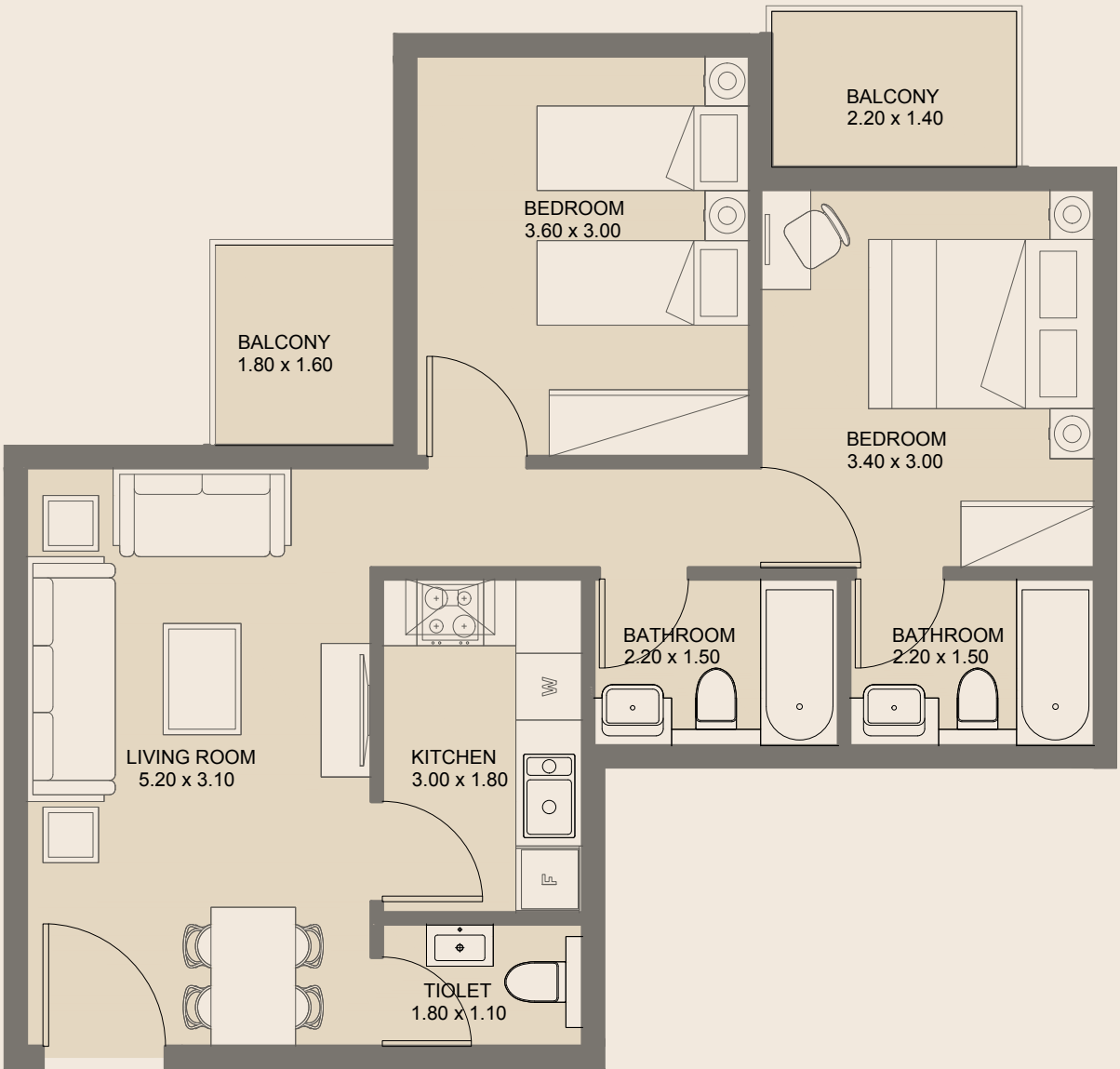


2BR | Type B

2nd, 3rd & 4th Floors

Internal Area	70.62 sq.m
External Area	6.14 sq.m
Total Area	76.76 sq.m

All drawings and dimensions are approximate. Drawings are not to scale and are subject to change without notice. The developer reserves the right to make revisions. The units are measured at typical floors in the building and columns may vary in size depending on the floor level. The furnishing and accessories shown are for representation only. The availability, length and width of the balcony varies depending on which floor and which orientation the unit is located within the building. There will be slight differences in the internal areas between the same unit types depending on the shaft sizes that go through the units.

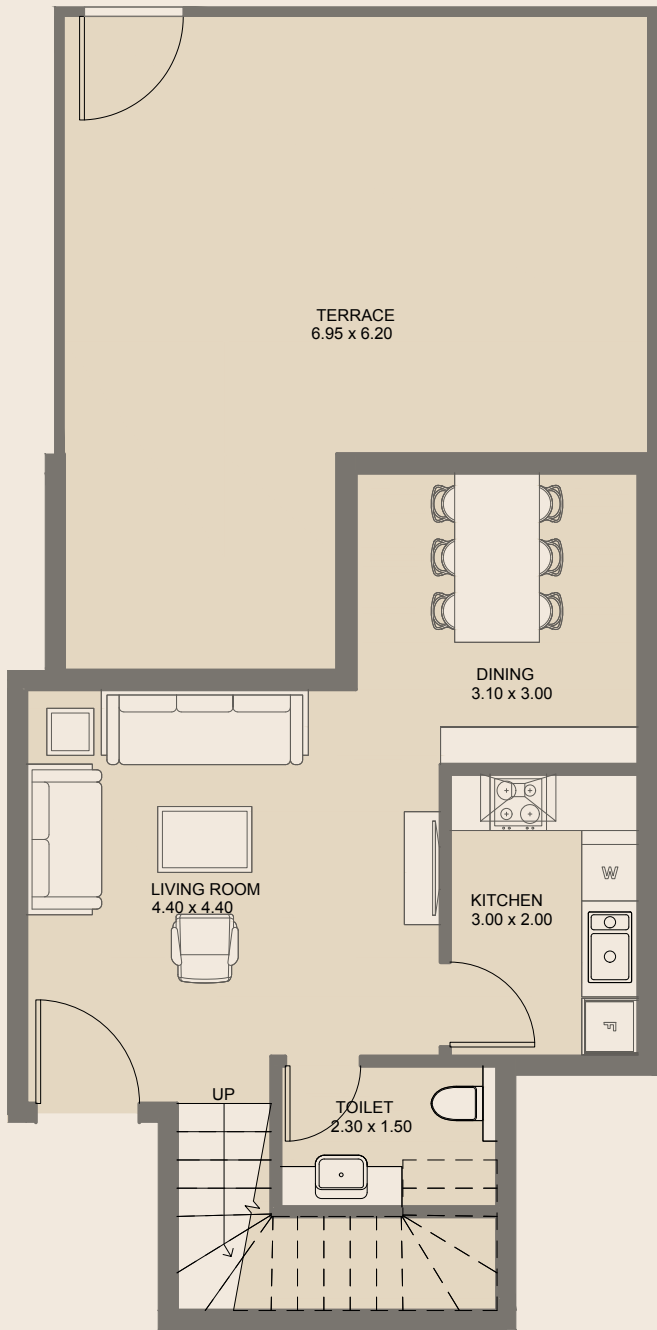


2BR | Type C

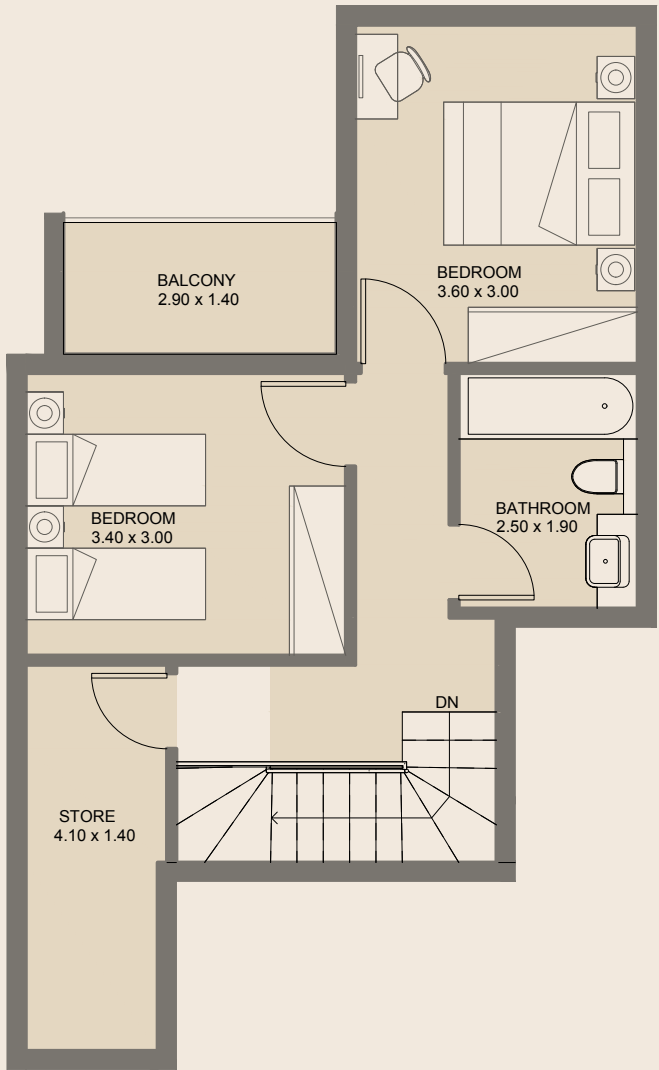
2nd, 3rd & 4th Floors

Internal Area	66.32 sq.m
External Area	7.15 sq.m
Total Area	73.48 sq.m

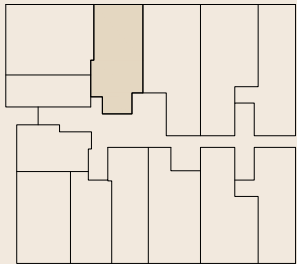
All drawings and dimensions are approximate. Drawings are not to scale and are subject to change without notice. The developer reserves the right to make revisions. The units are measured at typical floors in the building and columns may vary in size depending on the floor level. The furnishing and accessories shown are for representation only. The availability, length and width of the balcony varies depending on which floor and which orientation the unit is located within the building. There will be slight differences in the internal areas between the same unit types depending on the shaft sizes that go through the units.



Lower Floor

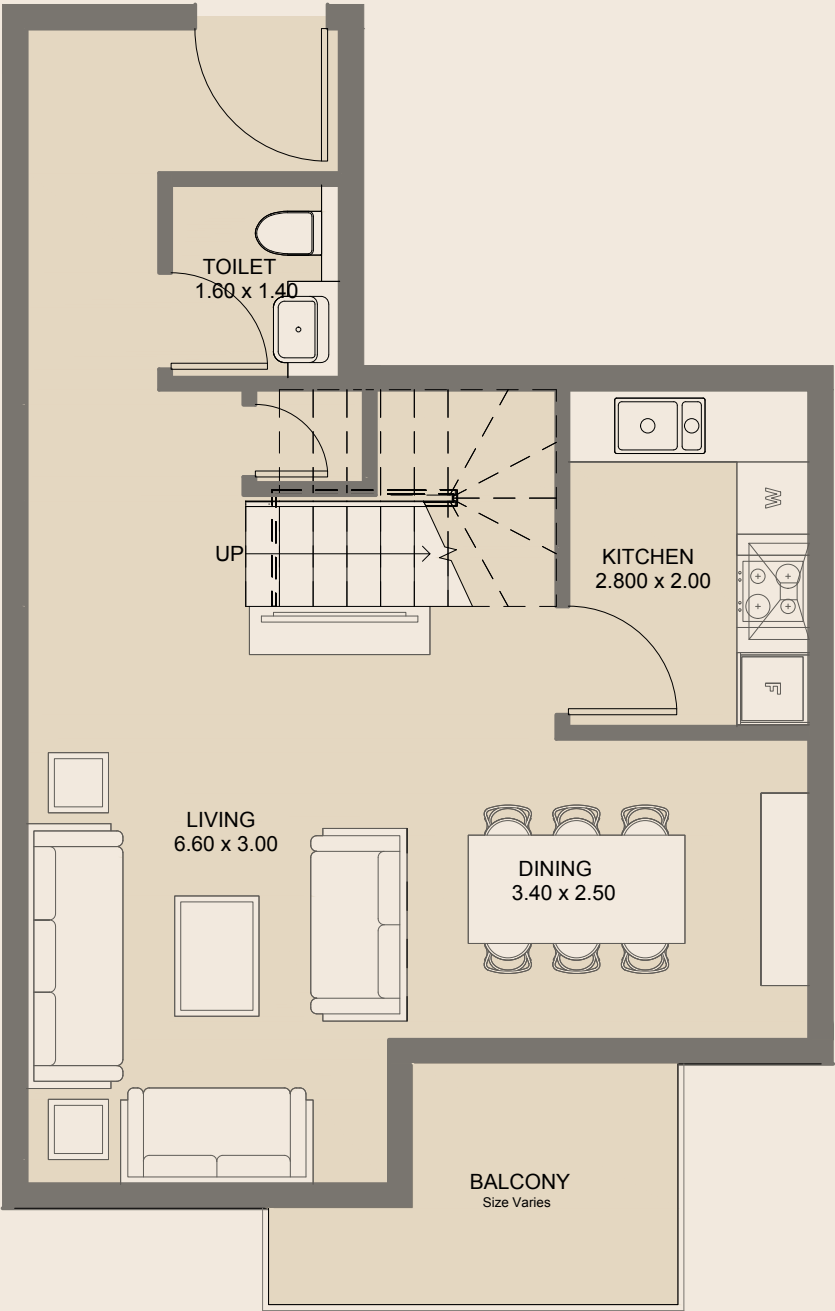


Upper Floor

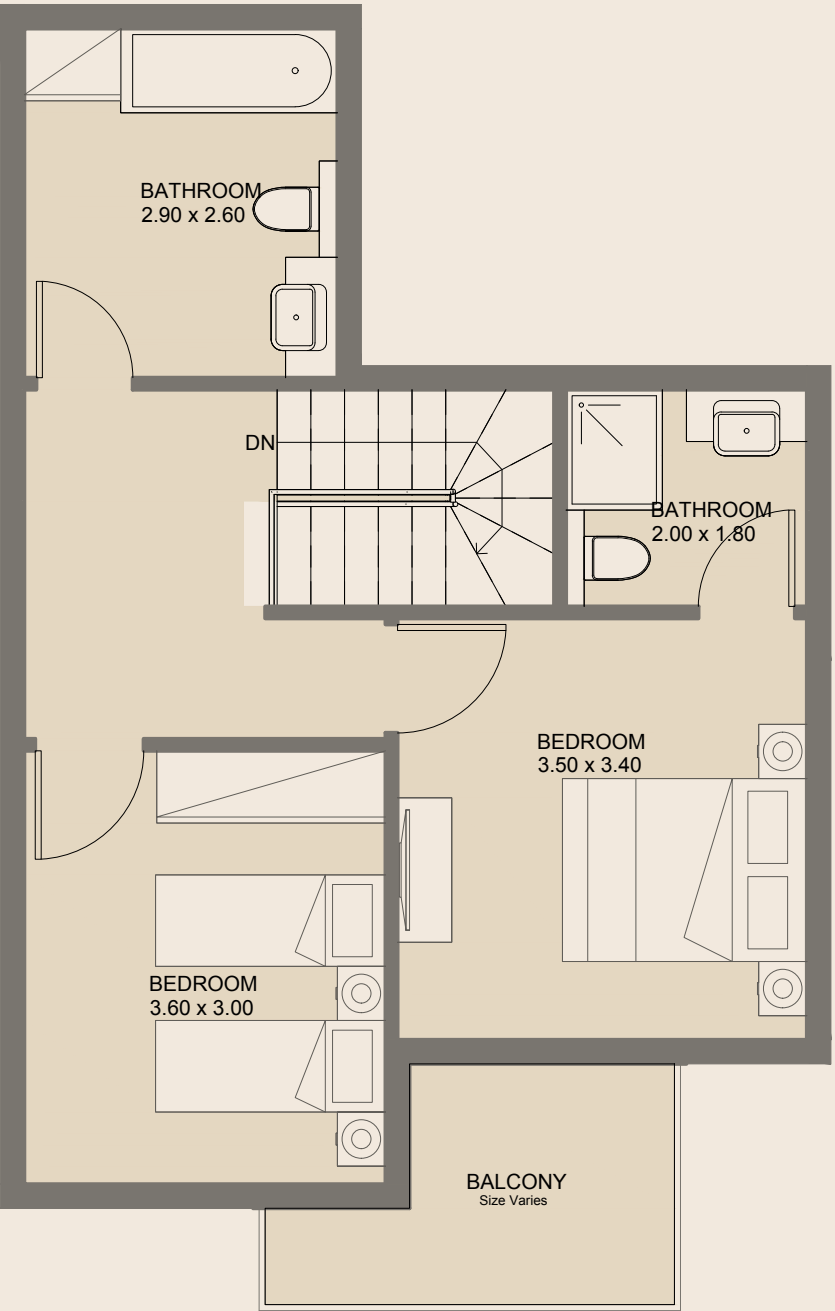


2BR - Duplex | Type A

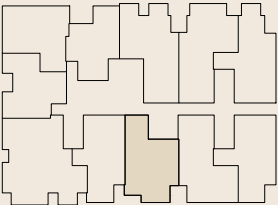
Ground Floor	
Internal Area	102.10 sq.m
External Area	47.47 sq.m
Total Area	149.57 sq.m



Lower Floor



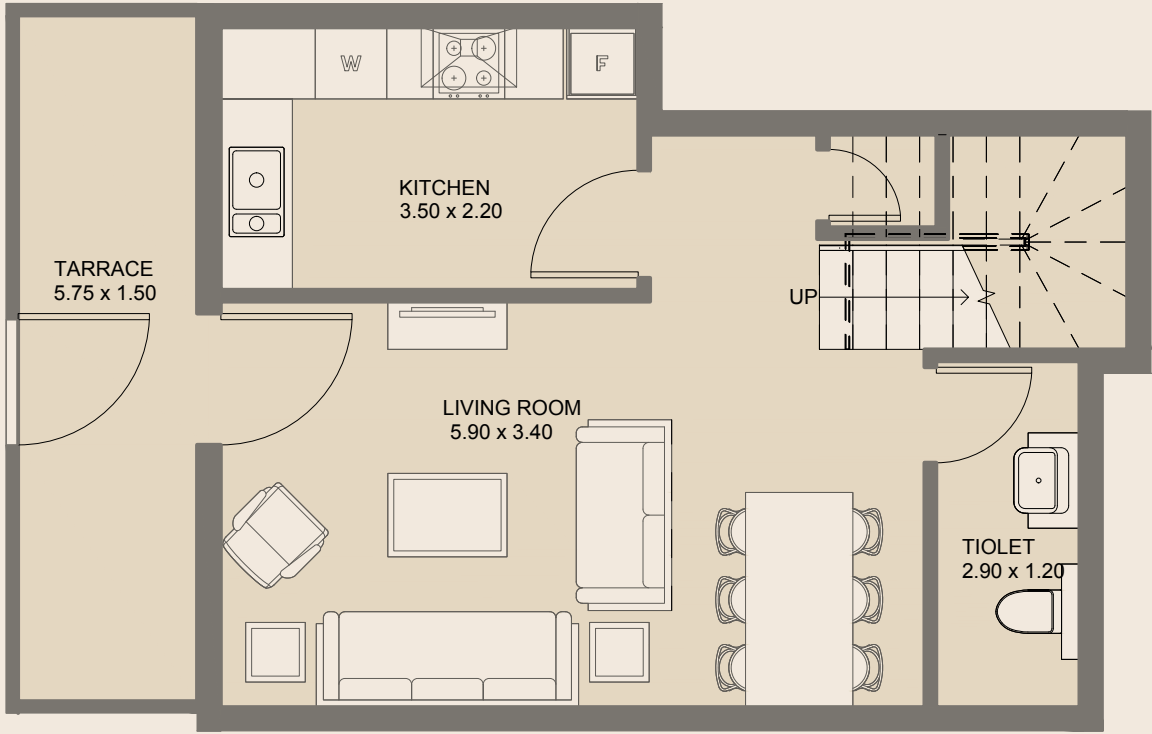
Upper Floor



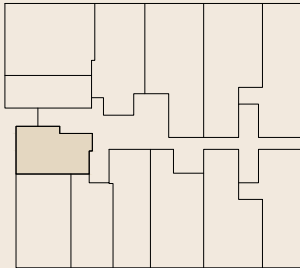
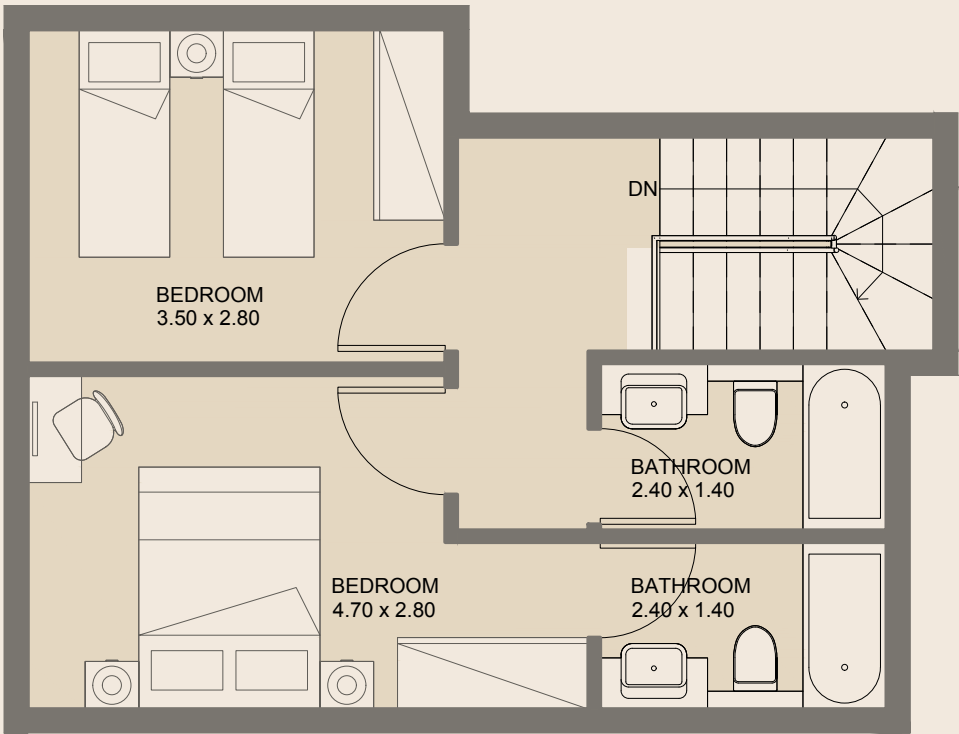
2BR - Duplex | Type B

GF & 5 th Floors	
Internal Area	111.22 sq.m
External Area	12.85 sq.m
Total Area	124.09 sq.m

Lower Floor



Upper Floor

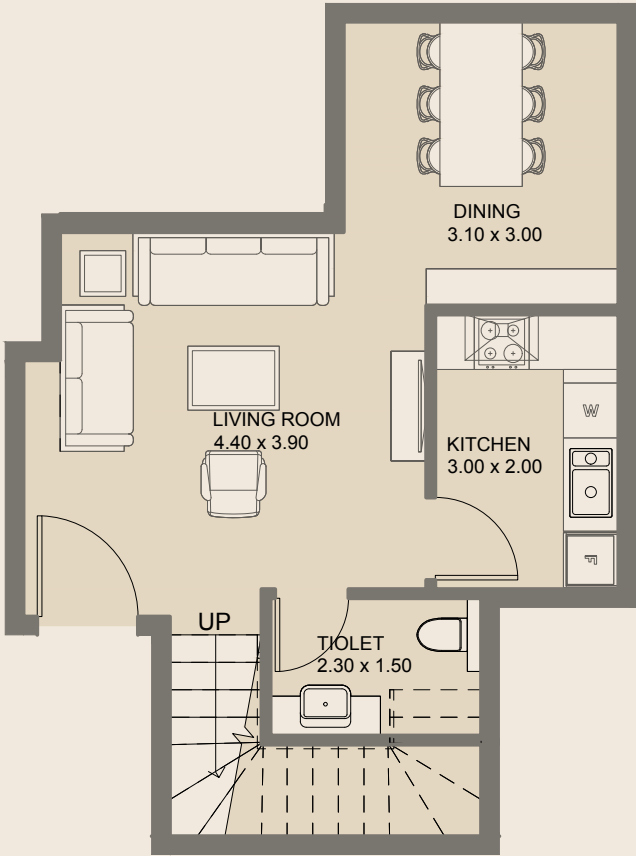


2BR - Duplex | Type C

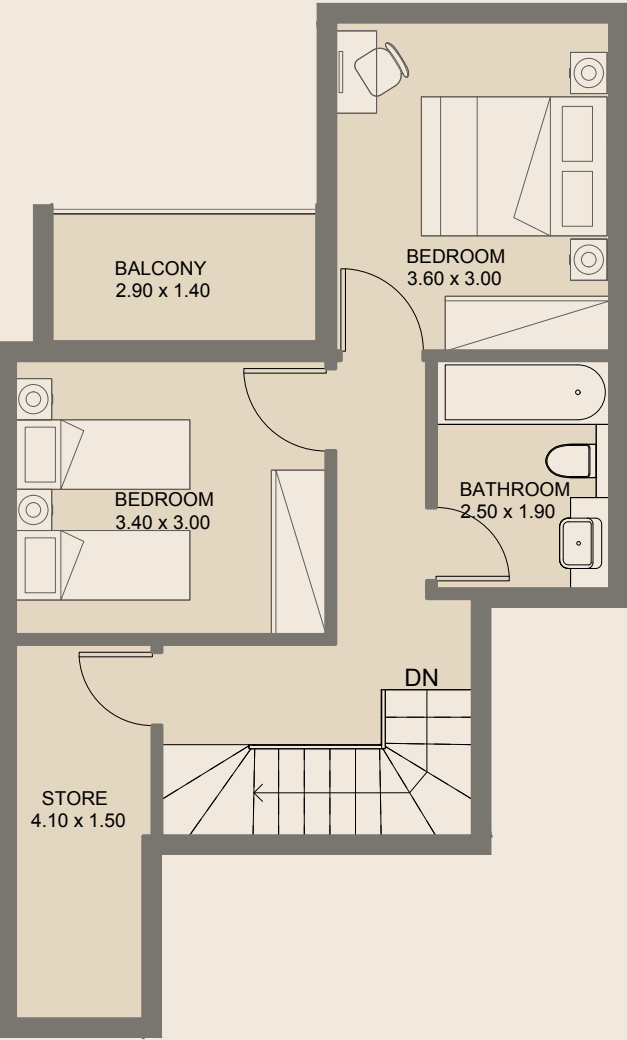
Ground Floor

Internal Area	91.07 sq.m
External Area	10.35 sq.m
Total Area	101.42 sq.m

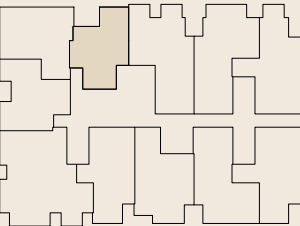
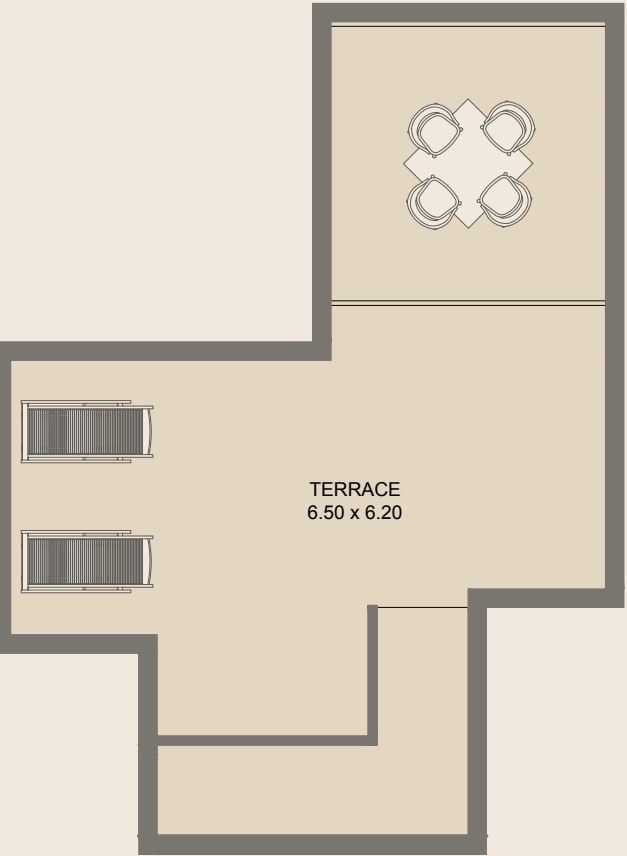
Lower Floor



Upper Floor



Upper Floor



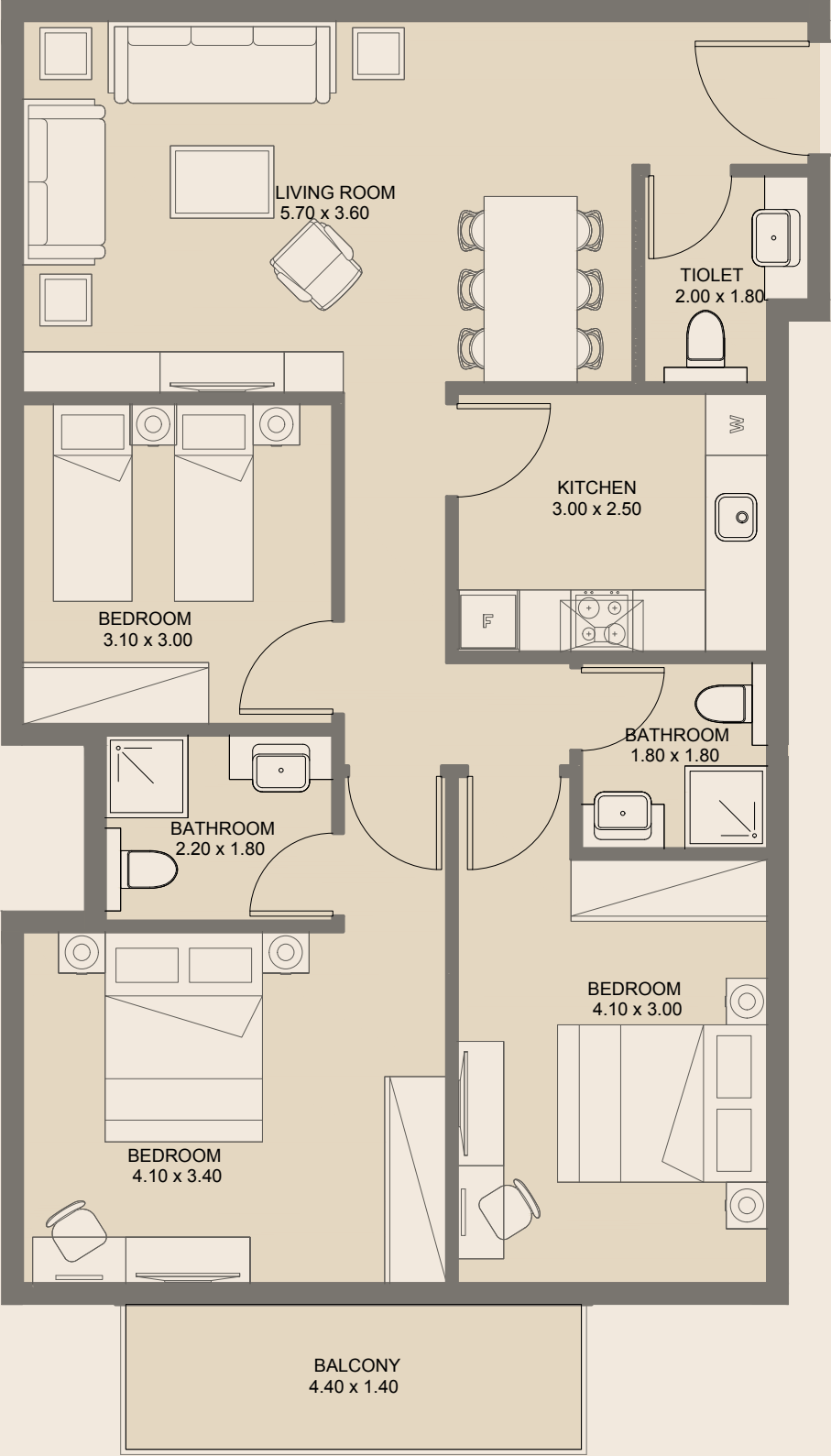
2BR - Duplex | Type D

5th & 6th Floors

Internal Area	101.04 sq.m
External Area	49.21 sq.m
Total Area	150.25 sq.m

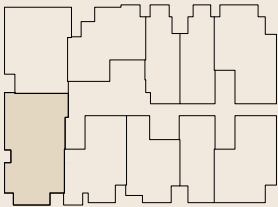
All drawings and dimensions are approximate. Drawings are not to scale and are subject to change without notice. The developer reserves the right to make revisions. The units are measured at typical floors in the building and columns may vary in size depending on the floor level. The furnishing and accessories shown are for representation only. The availability, length and width of the balcony varies depending on which floor and which orientation the unit is located within the building. There will be slight differences in the internal areas between the same unit types depending on the shaft sizes that go through the units.

All drawings and dimensions are approximate. Drawings are not to scale and are subject to change without notice. The developer reserves the right to make revisions. The units are measured at typical floors in the building and columns may vary in size depending on the floor level. The furnishing and accessories shown are for representation only. The availability, length and width of the balcony varies depending on which floor and which orientation the unit is located within the building. There will be slight differences in the internal areas between the same unit types depending on the shaft sizes that go through the units.



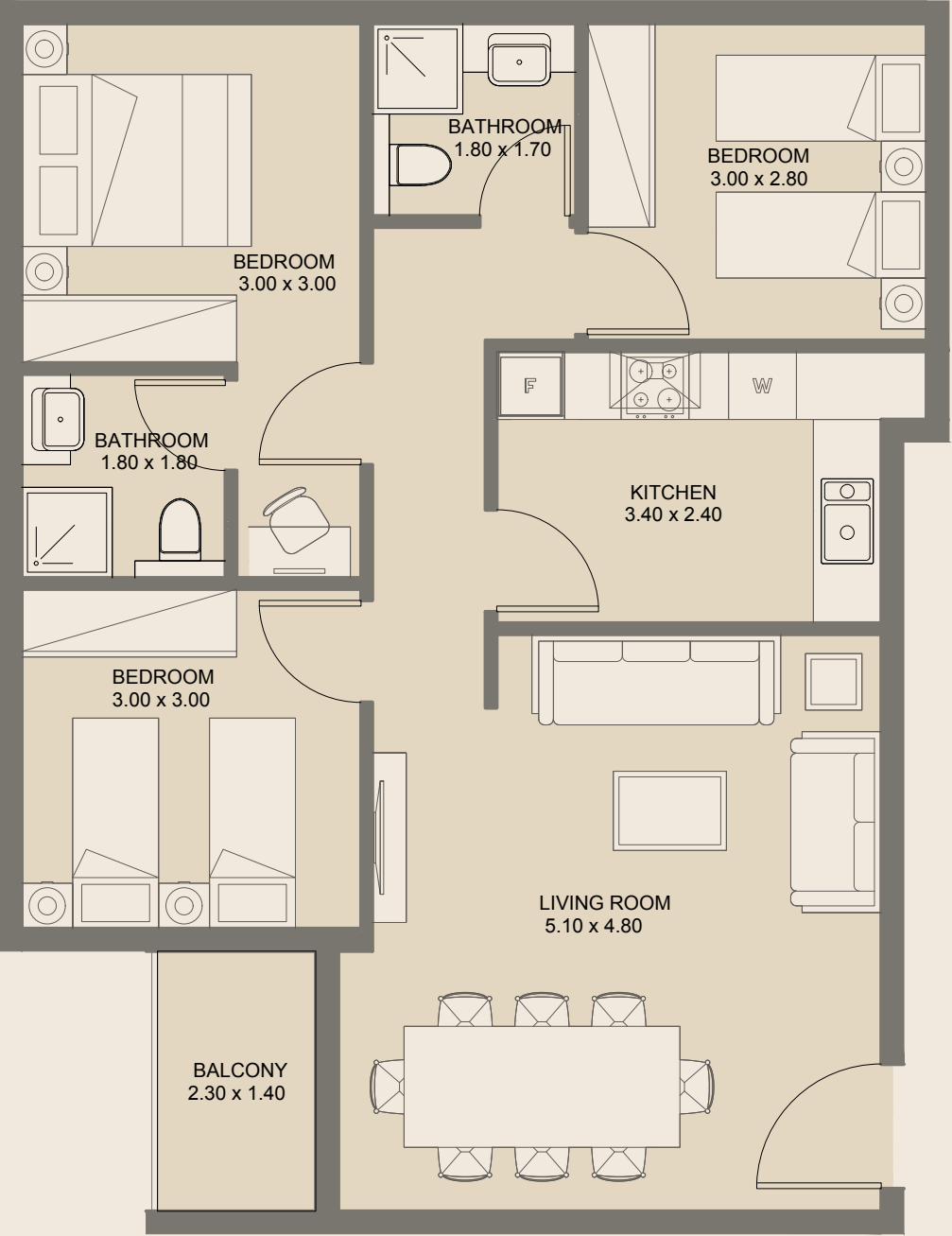
3BR | Type A

2nd, 3rd & 4th Floors



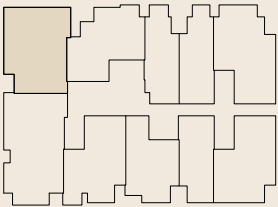
Internal Area	102.50 sq.m
External Area	7.39 sq.m
Total Area	109.89 sq.m

All drawings and dimensions are approximate. Drawings are not to scale and are subject to change without notice. The developer reserves the right to make revisions. The units are measured at typical floors in the building and columns may vary in size depending on the floor level. The furnishing and accessories shown are for representation only. The availability, length and width of the balcony varies depending on which floor and which orientation the unit is located within the building. There will be slight differences in the internal areas between the same unit types depending on the shaft sizes that go through the units.



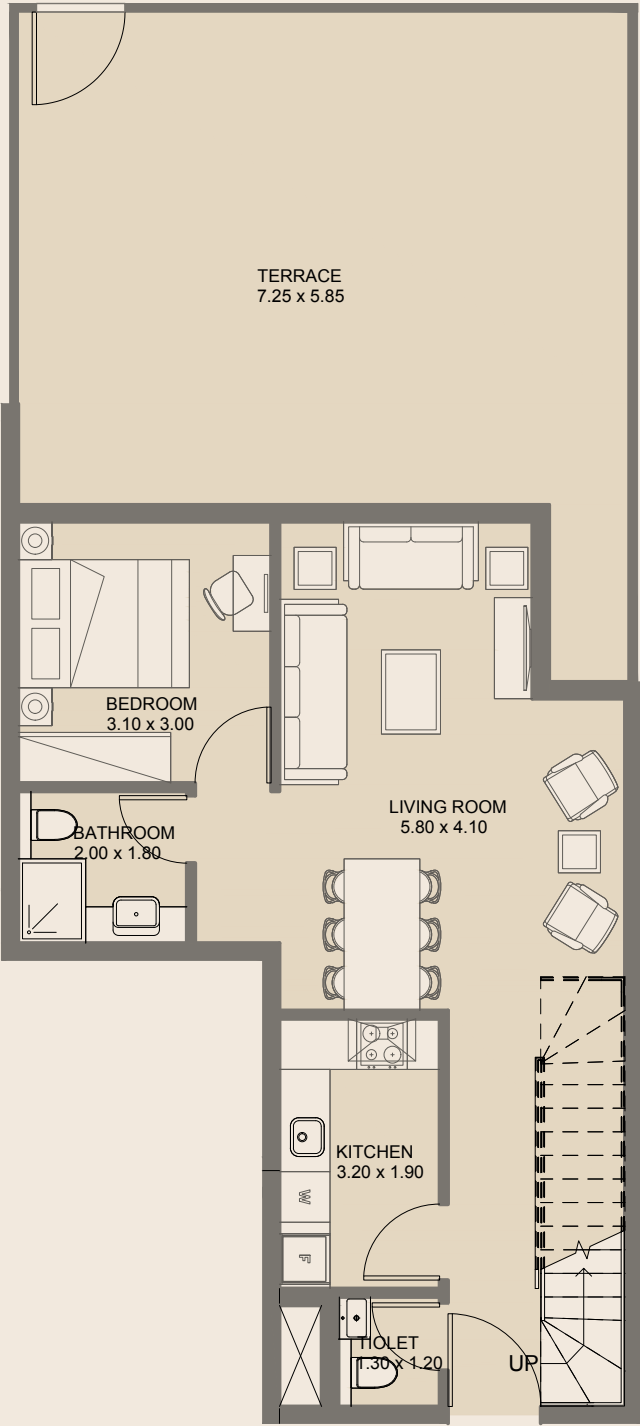
3BR | Type B

2nd, 3rd & 4th Floors

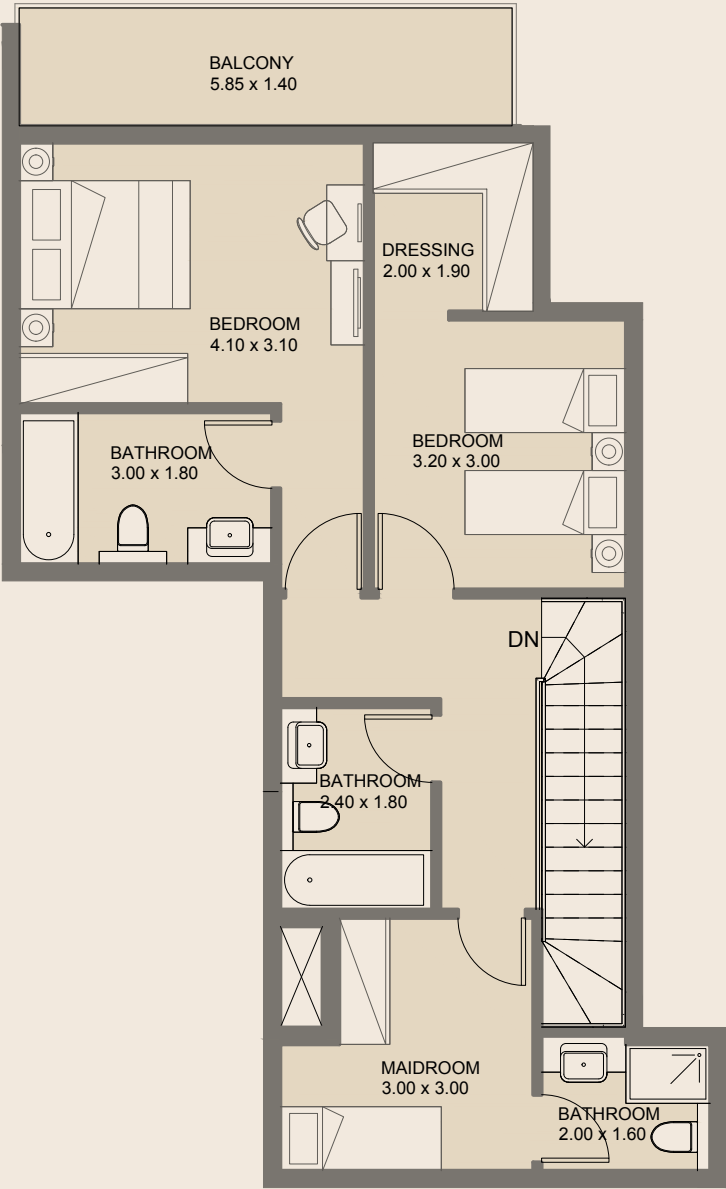


Internal Area	87.89 sq.m
External Area	3.86 sq.m
Total Area	91.76 sq.m

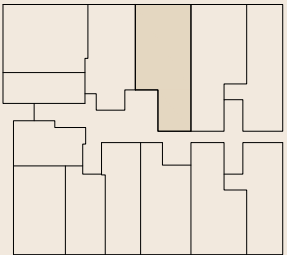
All drawings and dimensions are approximate. Drawings are not to scale and are subject to change without notice. The developer reserves the right to make revisions. The units are measured at typical floors in the building and columns may vary in size depending on the floor level. The furnishing and accessories shown are for representation only. The availability, length and width of the balcony varies depending on which floor and which orientation the unit is located within the building. There will be slight differences in the internal areas between the same unit types depending on the shaft sizes that go through the units.



Lower Floor



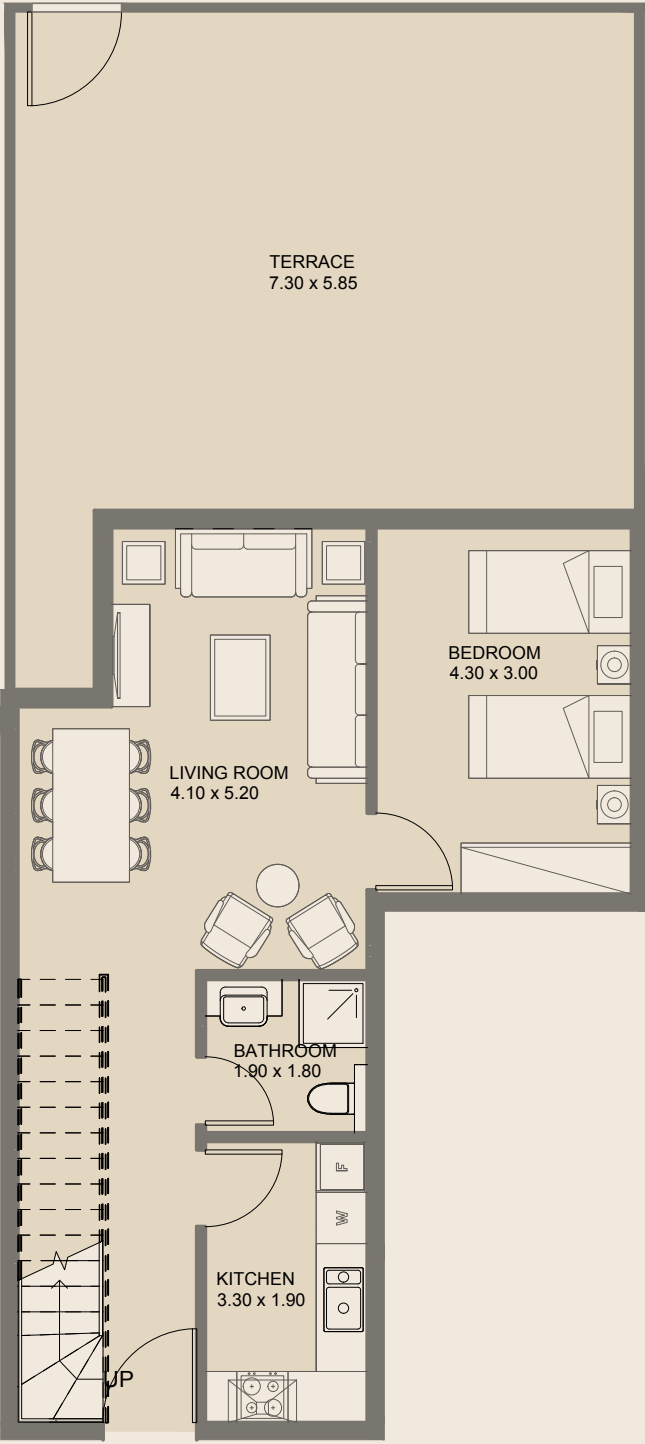
Upper Floor



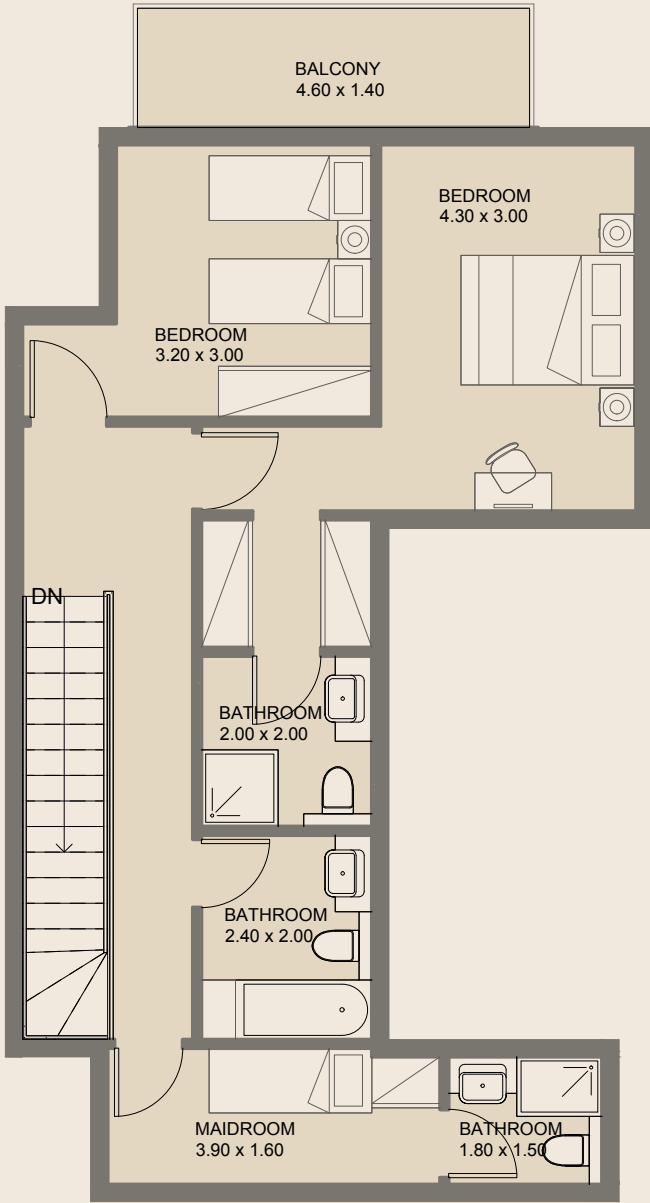
3BR - Duplex | Type A

Ground Floor	
Internal Area	140.25 sq.m
External Area	63.12 sq.m
Total Area	203.37 sq.m

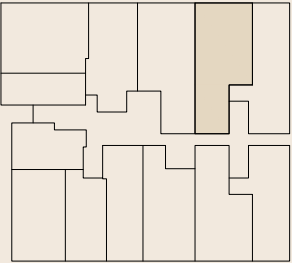
All drawings and dimensions are approximate. Drawings are not to scale and are subject to change without notice. The developer reserves the right to make revisions. The units are measured at typical floors in the building and columns may vary in size depending on the floor level. The furnishing and accessories shown are for representation only. The availability, length and width of the balcony varies depending on which floor and which orientation the unit is located within the building. There will be slight differences in the internal areas between the same unit types depending on the shaft sizes that go through the units.



Lower Floor



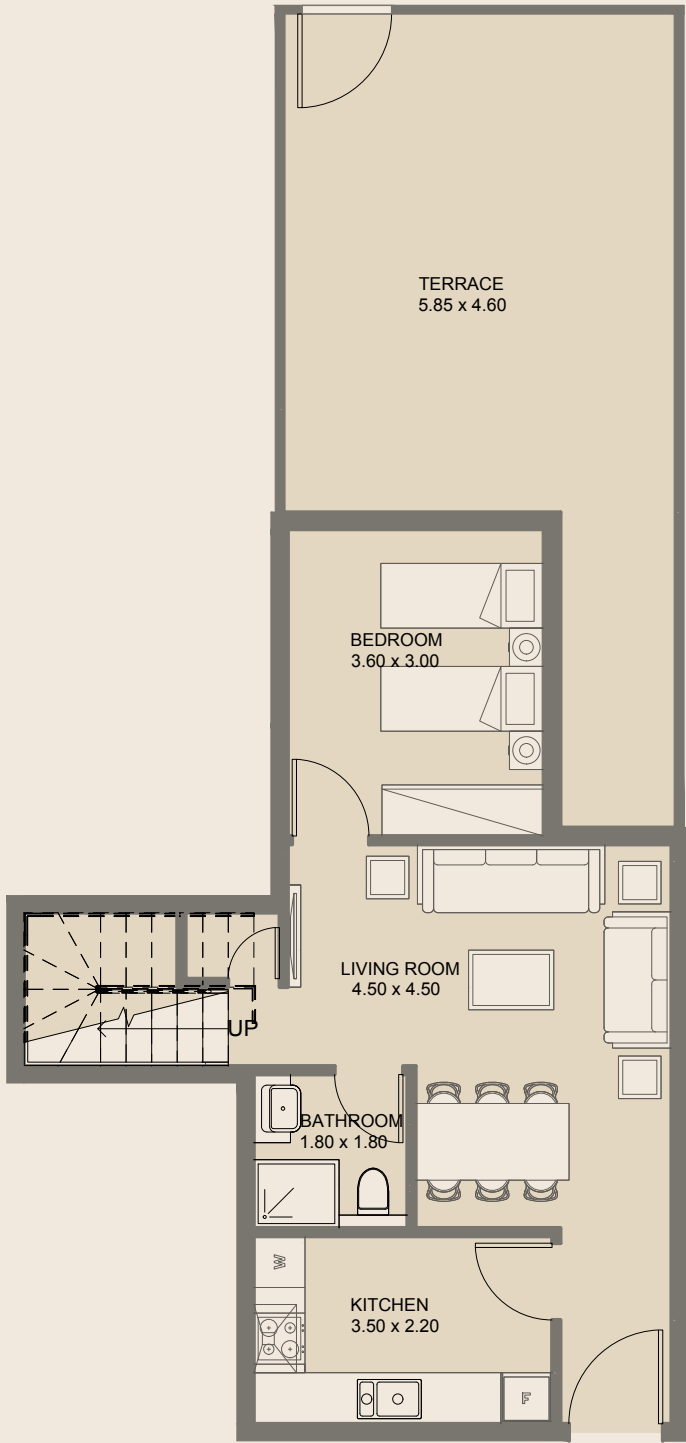
Upper Floor



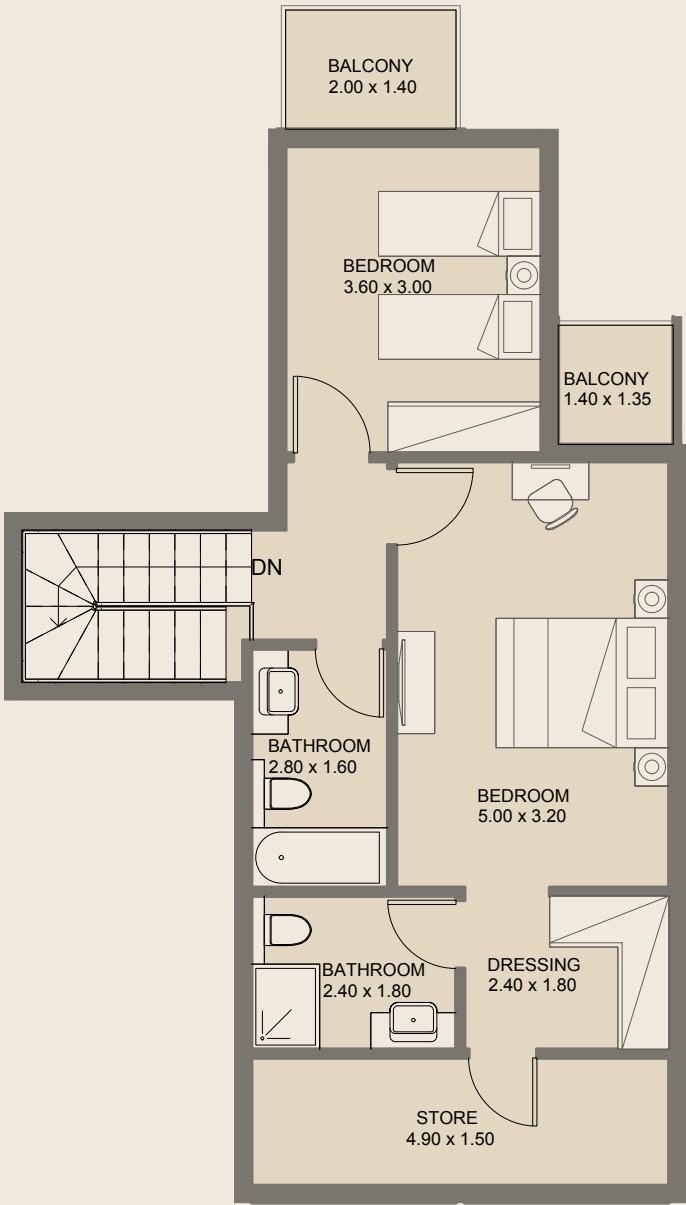
3BR - Duplex | Type B

Ground Floor	
Internal Area	139.69 sq.m
External Area	61.37 sq.m
Total Area	201.05 sq.m

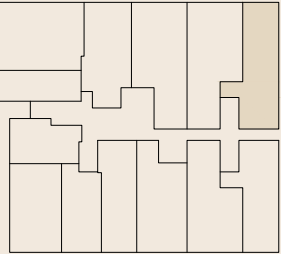
All drawings and dimensions are approximate. Drawings are not to scale and are subject to change without notice. The developer reserves the right to make revisions. The units are measured at typical floors in the building and columns may vary in size depending on the floor level. The furnishing and accessories shown are for representation only. The availability, length and width of the balcony varies depending on which floor and which orientation the unit is located within the building. There will be slight differences in the internal areas between the same unit types depending on the shaft sizes that go through the units.



Lower Floor

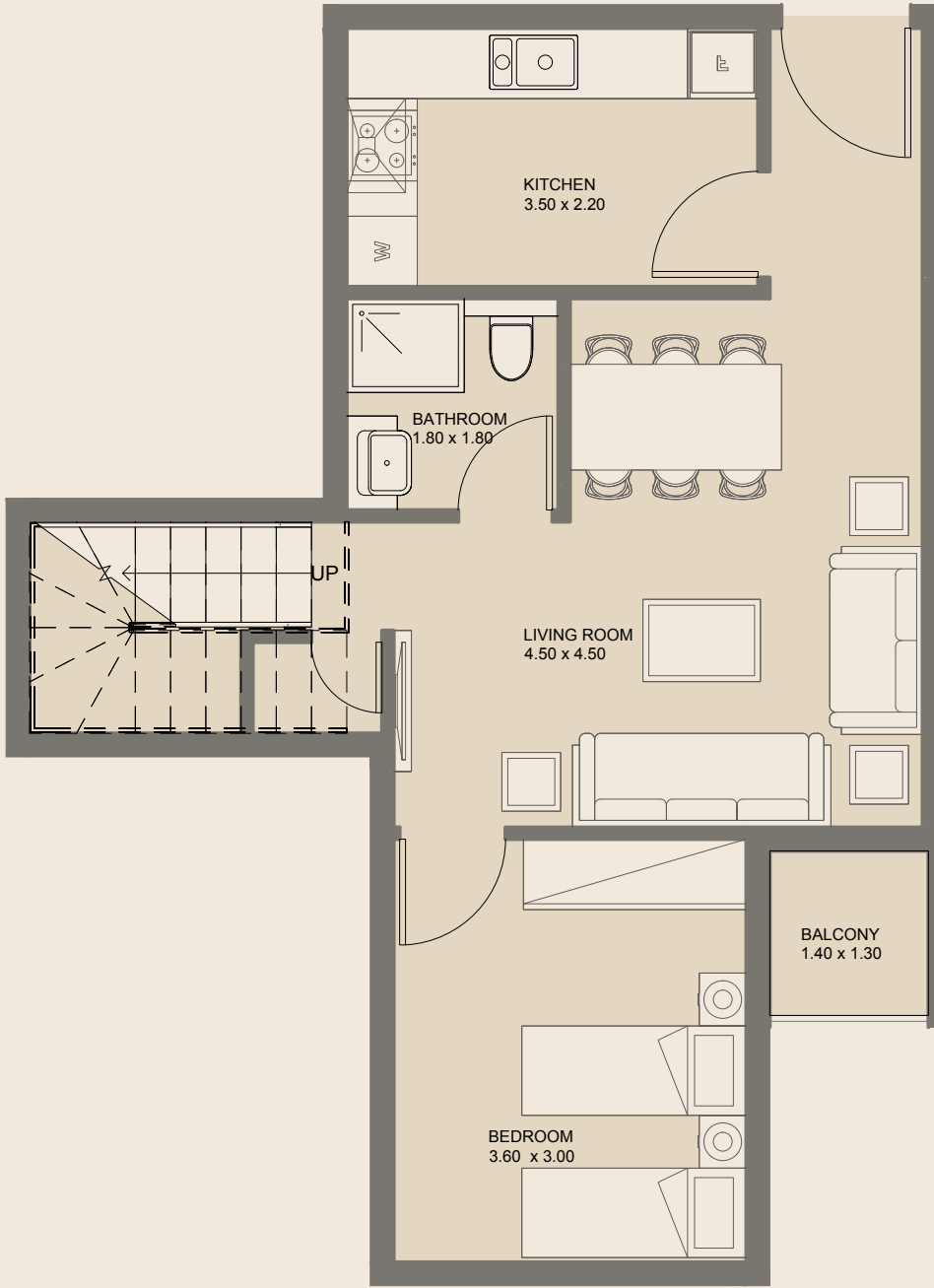


Upper Floor

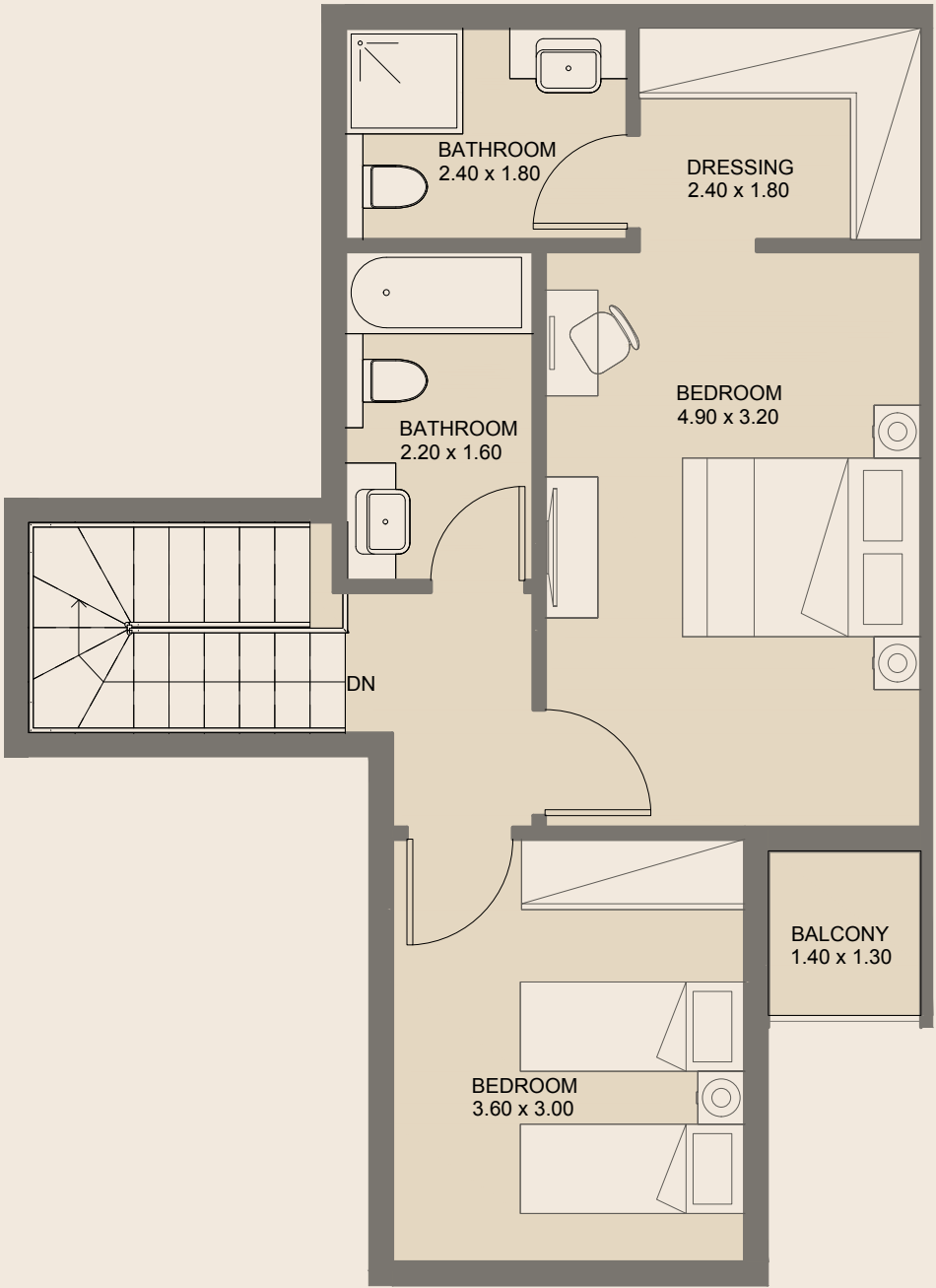


3BR - Duplex | Type C

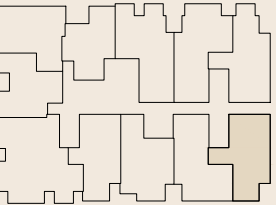
Ground Floor	
Internal Area	126.56 sq.m
External Area	43.91 sq.m
Total Area	170.47 sq.m



Lower Floor



Upper Floor

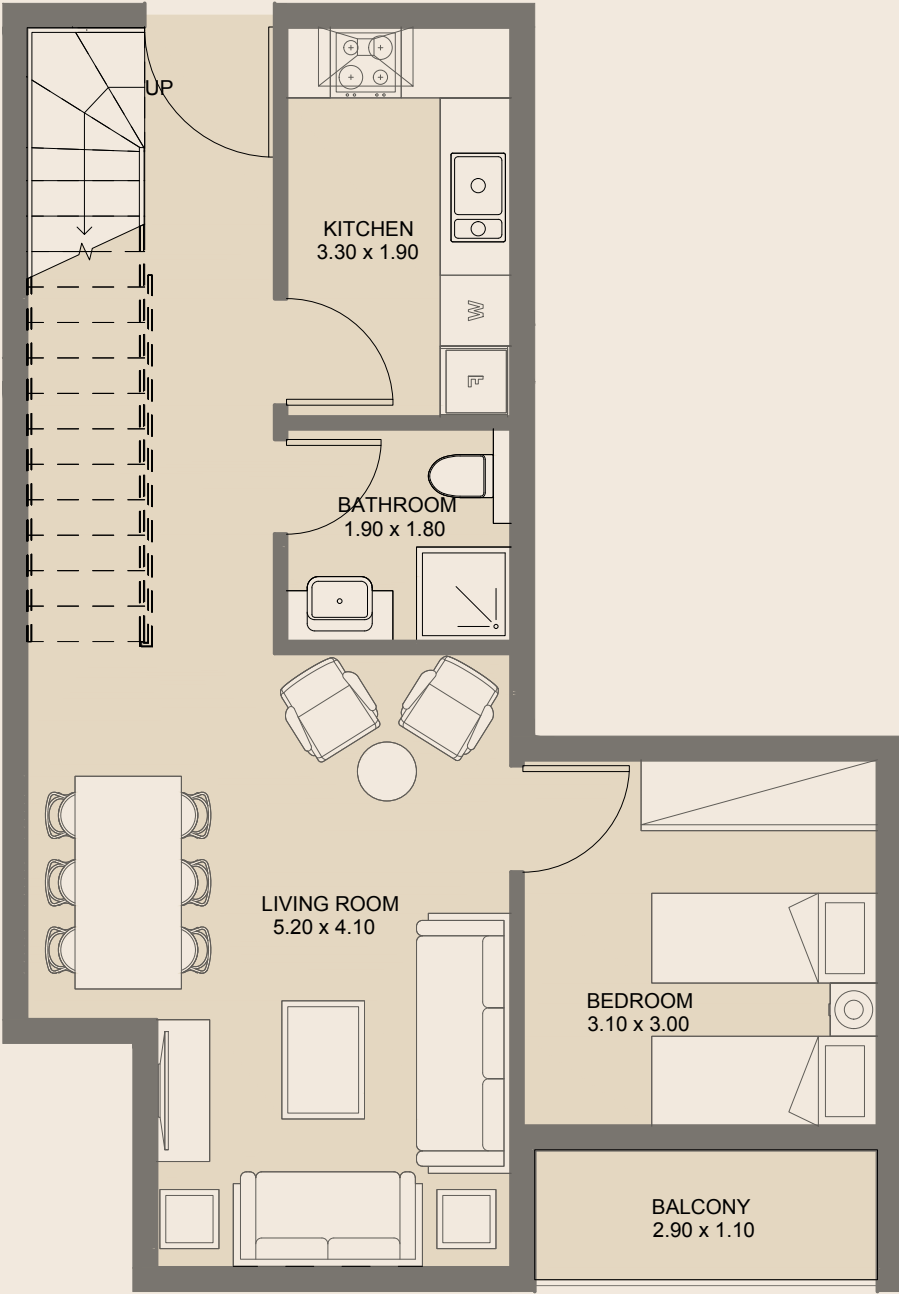


3BR - Duplex | Type D

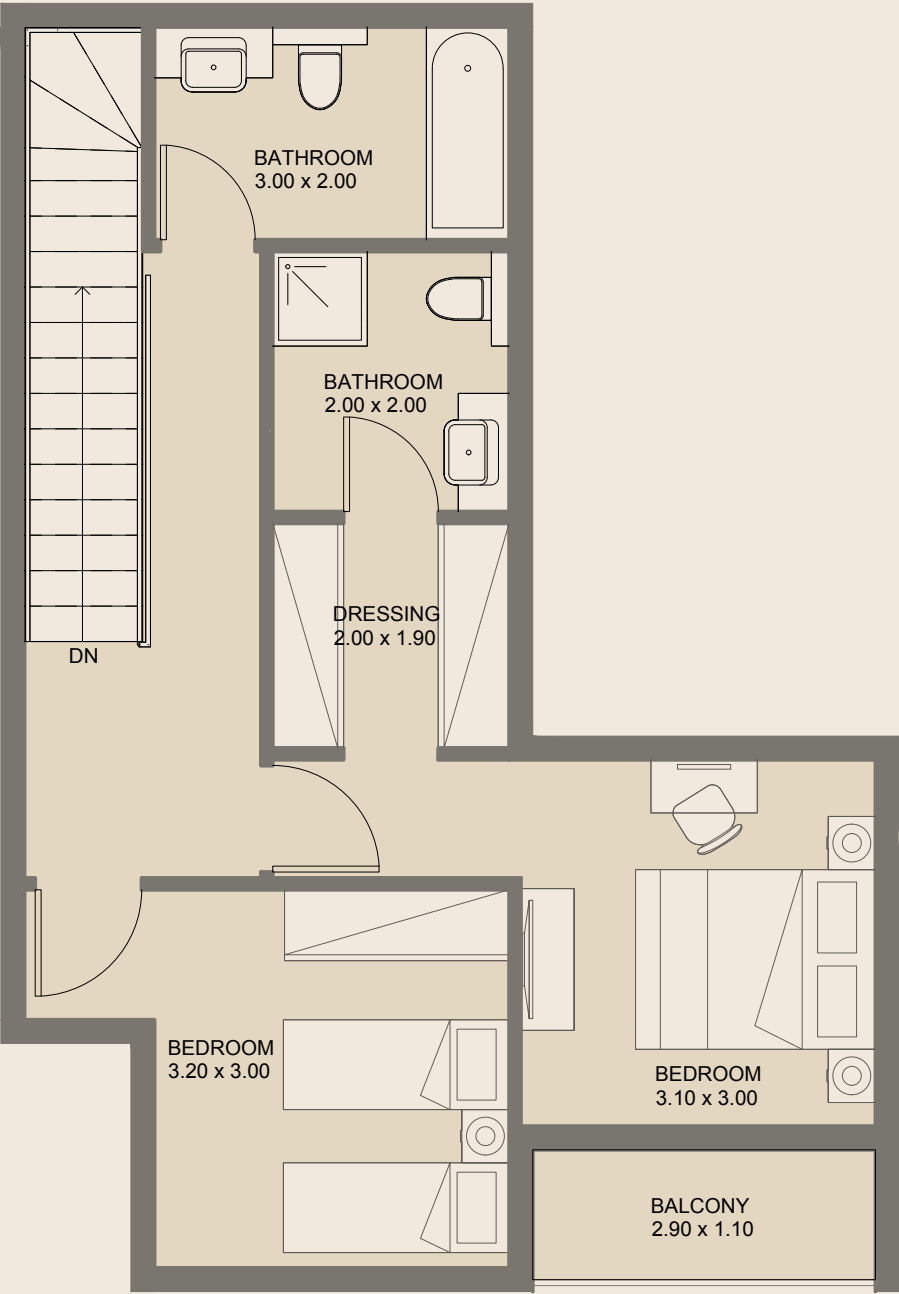
GF & 5 th Floors	
Internal Area	116.62 sq.m
External Area	4.45 sq.m
Total Area	121.52 sq.m

All drawings and dimensions are approximate. Drawings are not to scale and are subject to change without notice. The developer reserves the right to make revisions. The units are measured at typical floors in the building and columns may vary in size depending on the floor level. The furnishing and accessories shown are for representation only. The availability, length and width of the balcony varies depending on which floor and which orientation the unit is located within the building. There will be slight differences in the internal areas between the same unit types depending on the shaft sizes that go through the units.

All drawings and dimensions are approximate. Drawings are not to scale and are subject to change without notice. The developer reserves the right to make revisions. The units are measured at typical floors in the building and columns may vary in size depending on the floor level. The furnishing and accessories shown are for representation only. The availability, length and width of the balcony varies depending on which floor and which orientation the unit is located within the building. There will be slight differences in the internal areas between the same unit types depending on the shaft sizes that go through the units.



Lower Floor

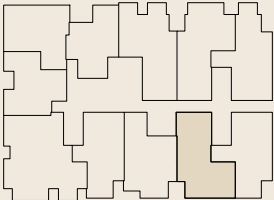


Upper Floor

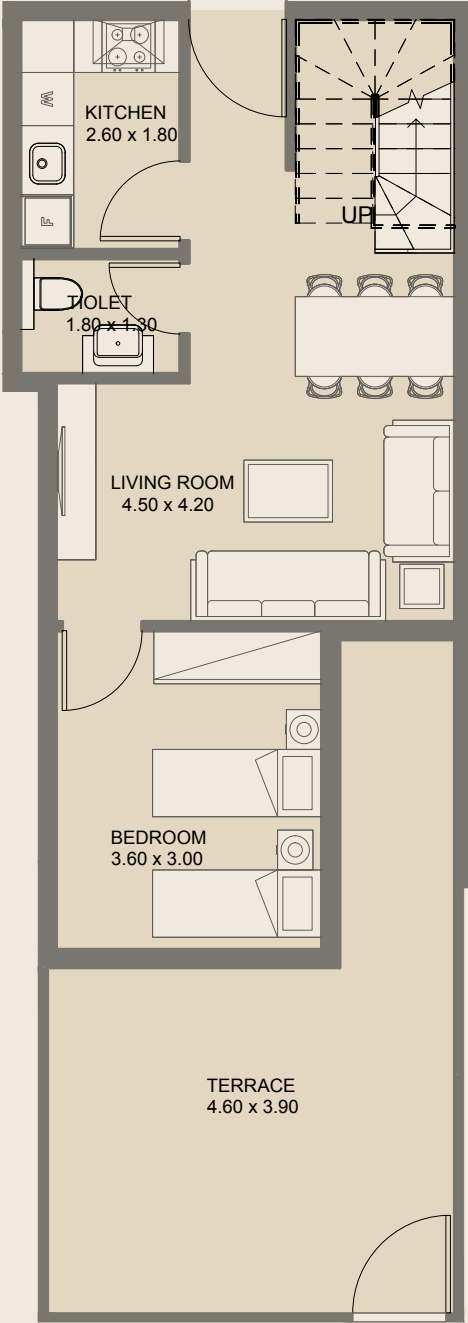
3BR - Duplex | Type E

GF & 5th Floors

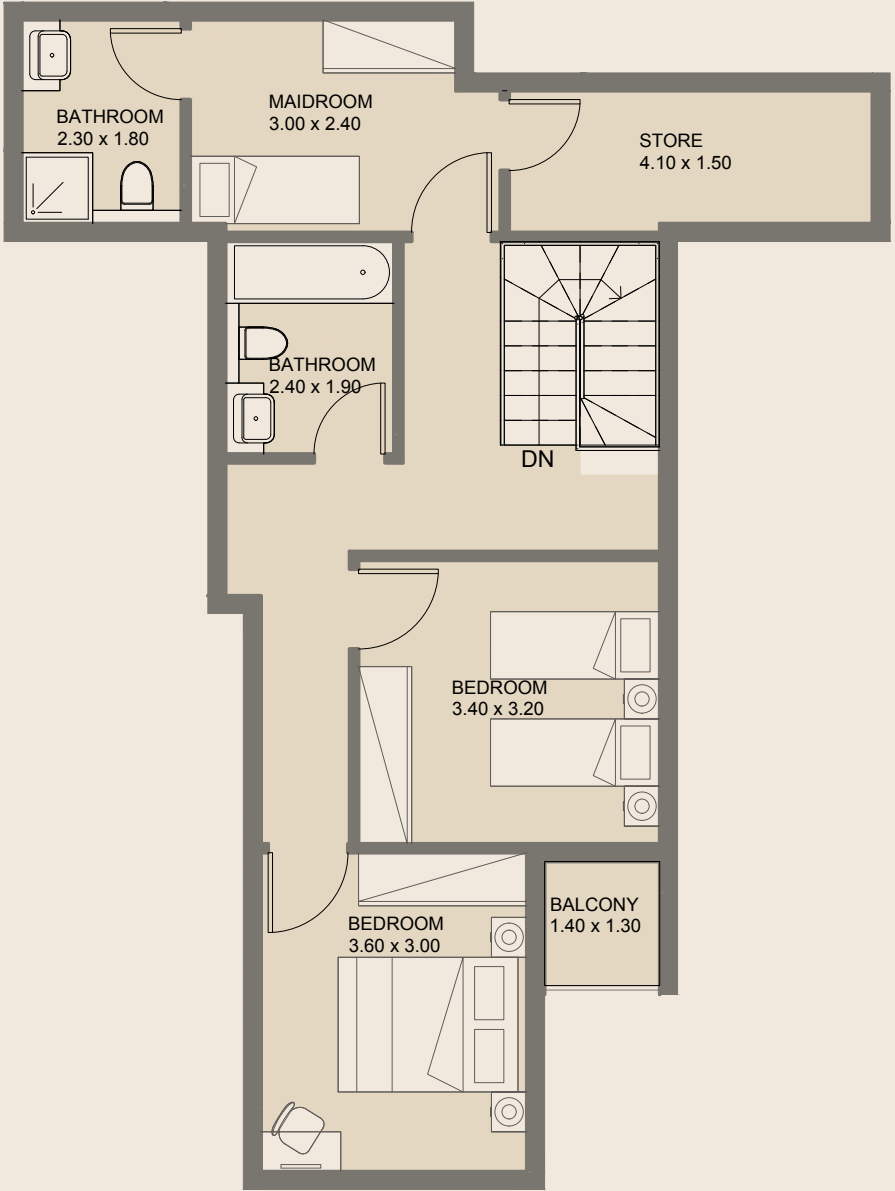
Internal Area	119.51 sq.m
External Area	7.66 sq.m
Total Area	127.87 sq.m



All drawings and dimensions are approximate. Drawings are not to scale and are subject to change without notice. The developer reserves the right to make revisions. The units are measured at typical floors in the building and columns may vary in size depending on the floor level. The furnishing and accessories shown are for representation only. The availability, length and width of the balcony varies depending on which floor and which orientation the unit is located within the building. There will be slight differences in the internal areas between the same unit types depending on the shaft sizes that go through the units.



Lower Floor

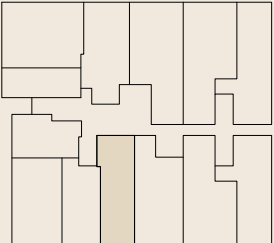


Upper Floor

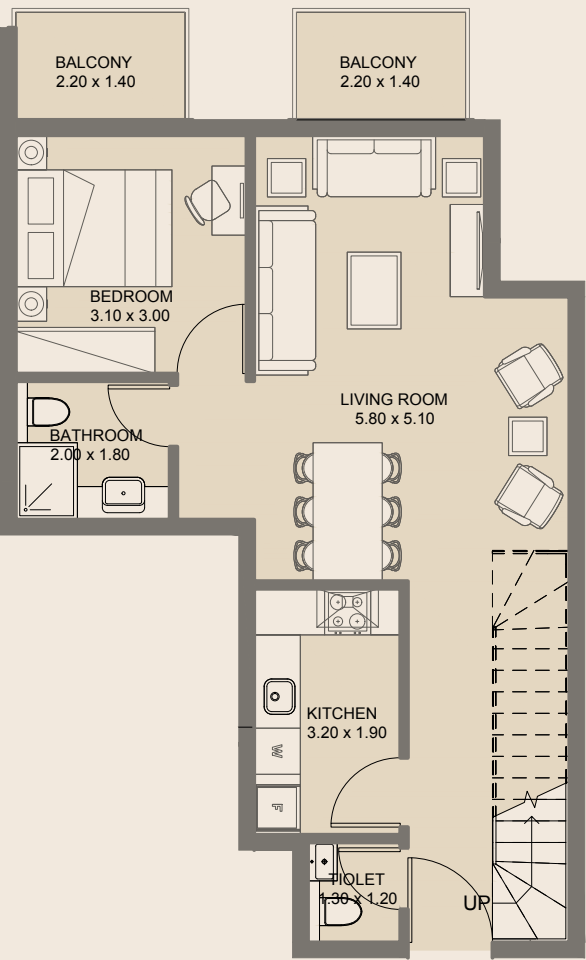
3BR - Duplex | Type F

Ground Floor

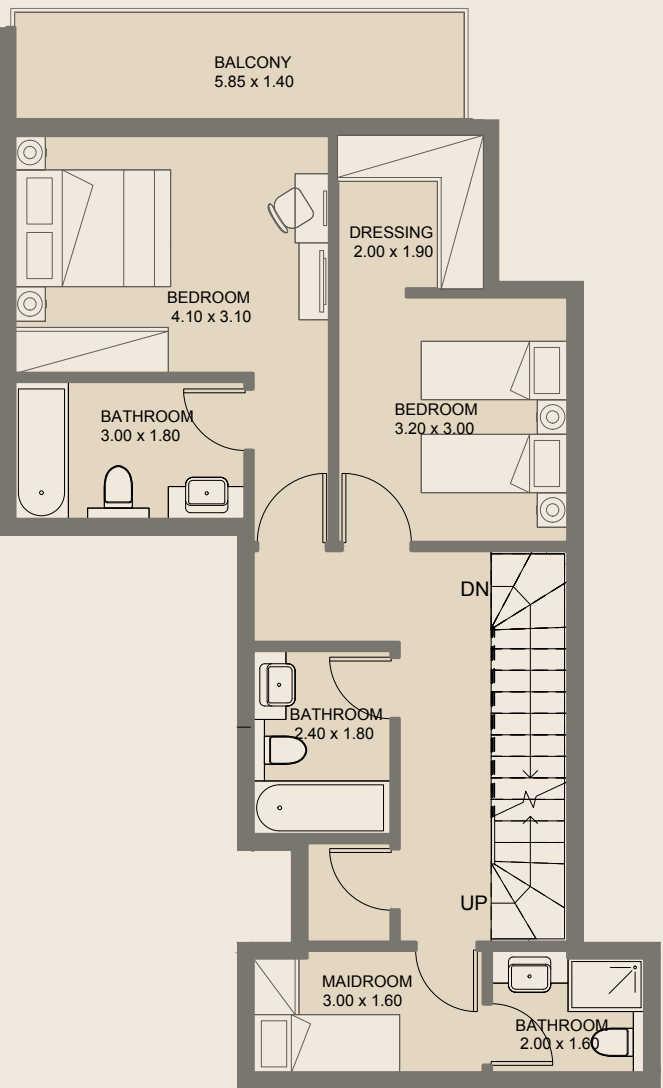
Internal Area	125.57 sq.m
External Area	29.48 sq.m
Total Area	155.06 sq.m



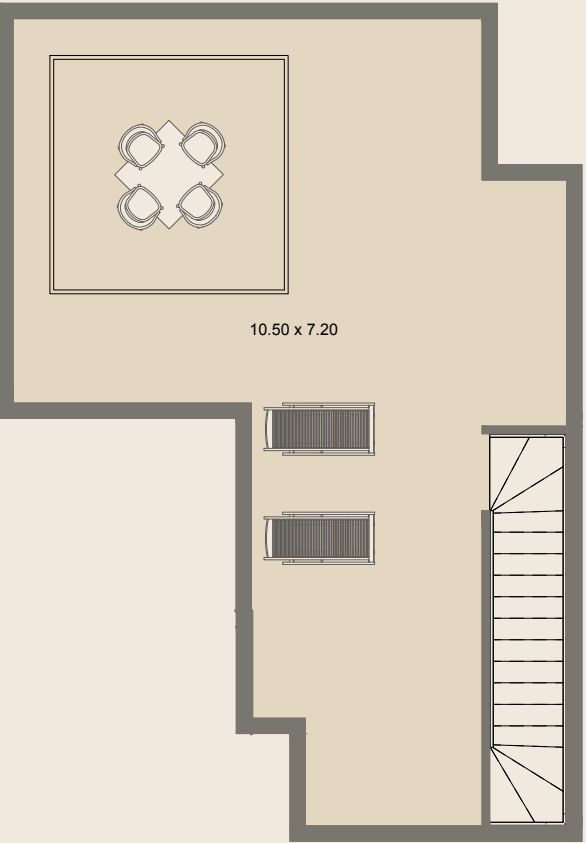
All drawings and dimensions are approximate. Drawings are not to scale and are subject to change without notice. The developer reserves the right to make revisions. The units are measured at typical floors in the building and columns may vary in size depending on the floor level. The furnishing and accessories shown are for representation only. The availability, length and width of the balcony varies depending on which floor and which orientation the unit is located within the building. There will be slight differences in the internal areas between the same unit types depending on the shaft sizes that go through the units.



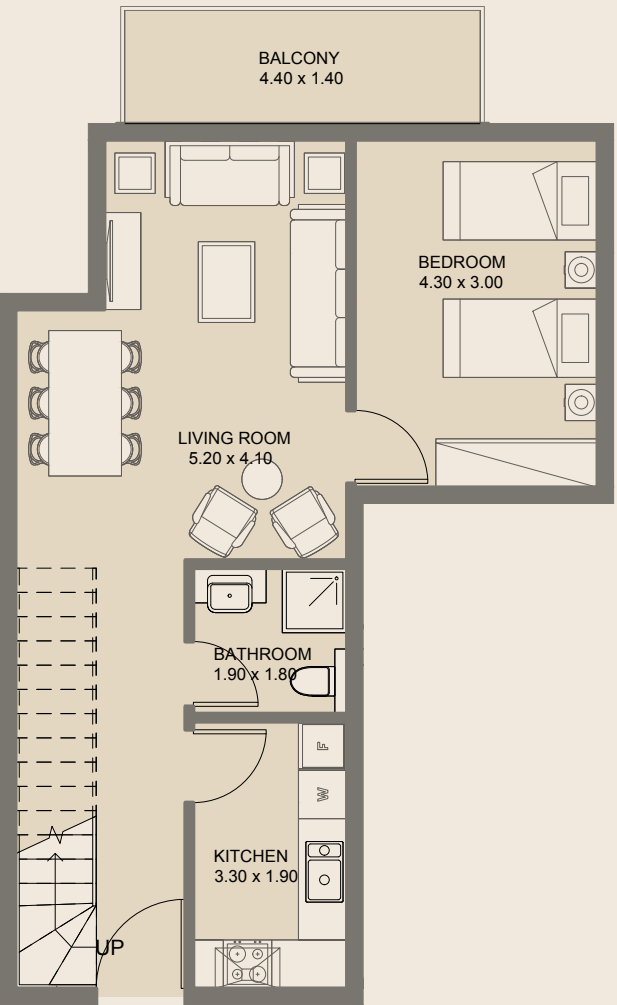
Lower Floor



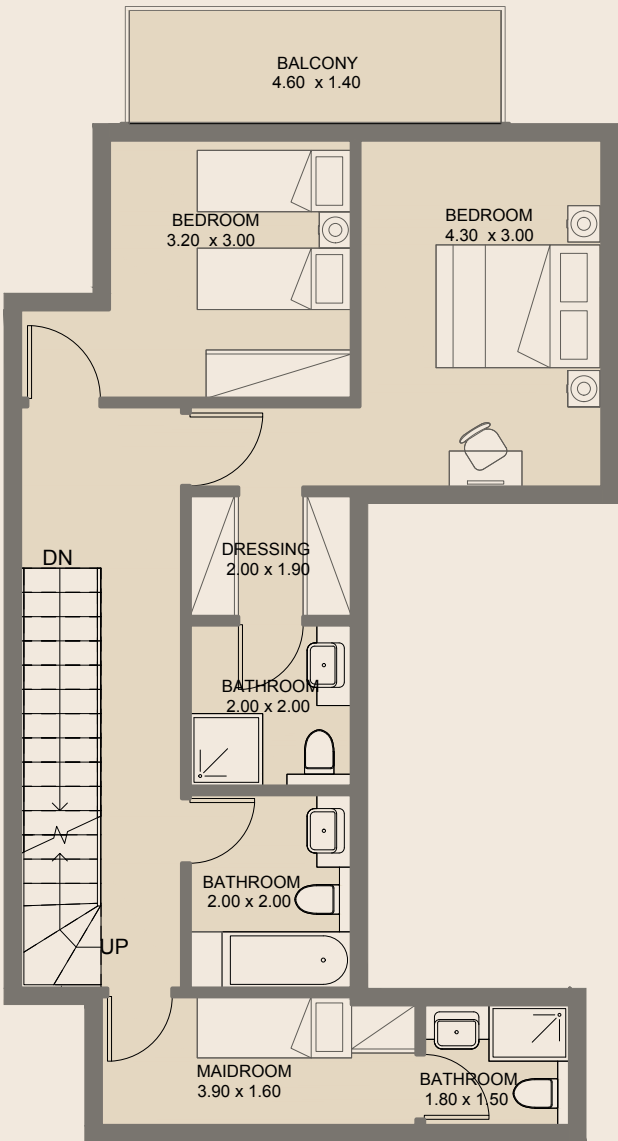
Upper Floor



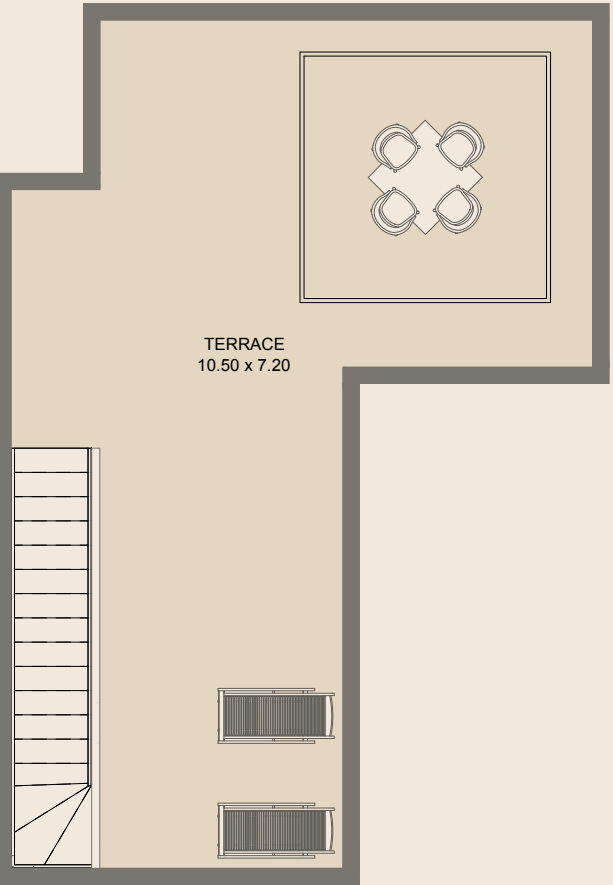
Terrace



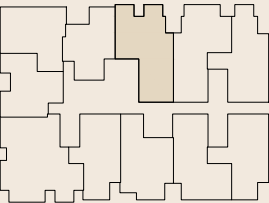
Lower Floor



Upper Floor



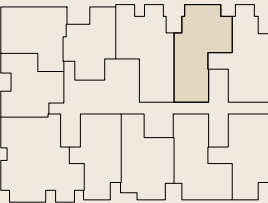
Terrace



3BR - Duplex | Type G

5th & 6th Floors

Internal Area	140.64 sq.m
External Area	82.91 sq.m
Total Area	223.55 sq.m



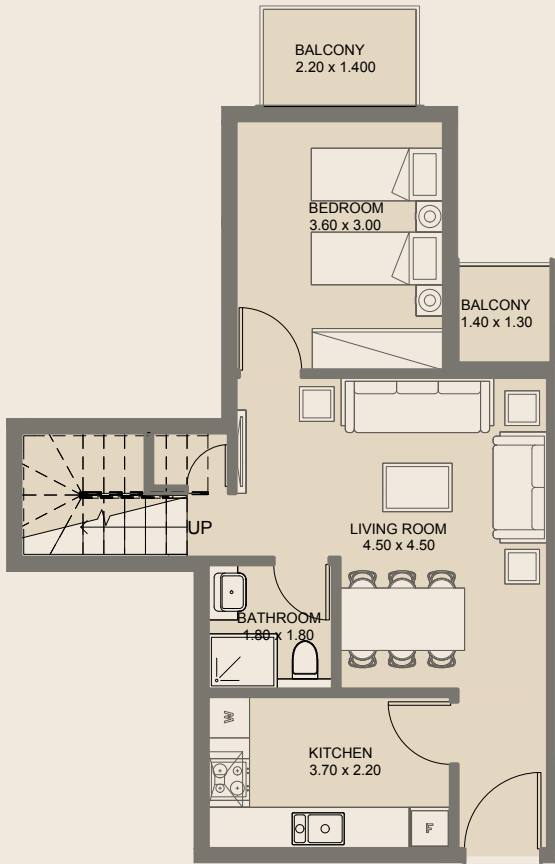
3BR - Duplex | Type H

5th & 6th Floors

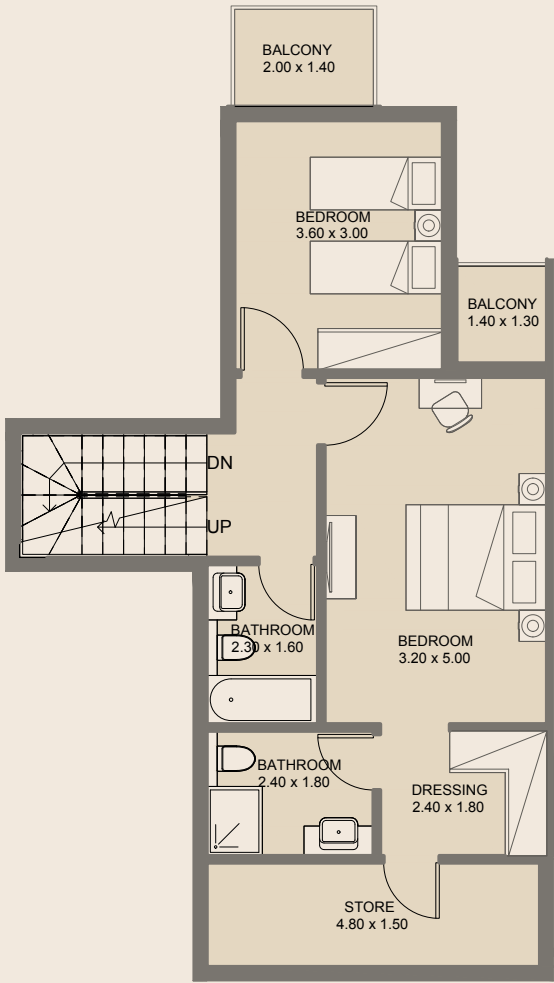
Internal Area	140.32 sq.m
External Area	79.47 sq.m
Total Area	219.79 sq.m

All drawings and dimensions are approximate. Drawings are not to scale and are subject to change without notice. The developer reserves the right to make revisions. The units are measured at typical floors in the building and columns may vary in size depending on the floor level. The furnishing and accessories shown are for representation only. The availability, length and width of the balcony varies depending on which floor and which orientation the unit is located within the building. There will be slight differences in the internal areas between the same unit types depending on the shaft sizes that go through the units.

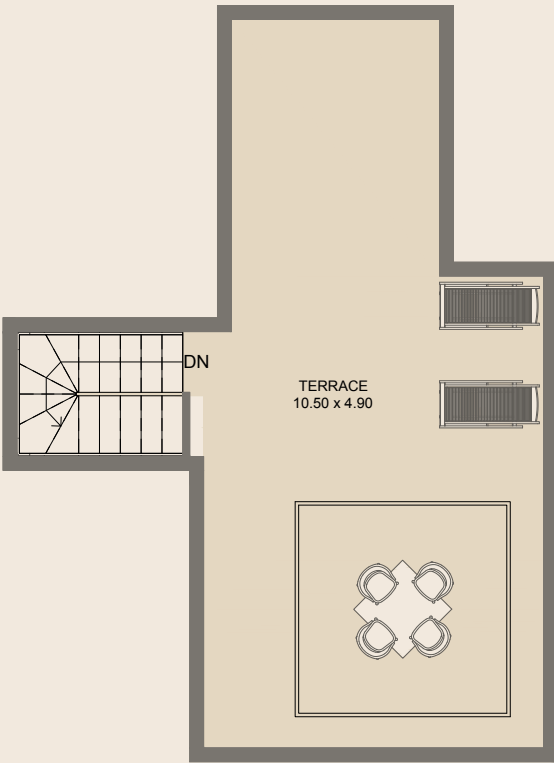
All drawings and dimensions are approximate. Drawings are not to scale and are subject to change without notice. The developer reserves the right to make revisions. The units are measured at typical floors in the building and columns may vary in size depending on the floor level. The furnishing and accessories shown are for representation only. The availability, length and width of the balcony varies depending on which floor and which orientation the unit is located within the building. There will be slight differences in the internal areas between the same unit types depending on the shaft sizes that go through the units.



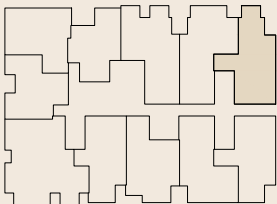
Lower Floor



Upper Floor



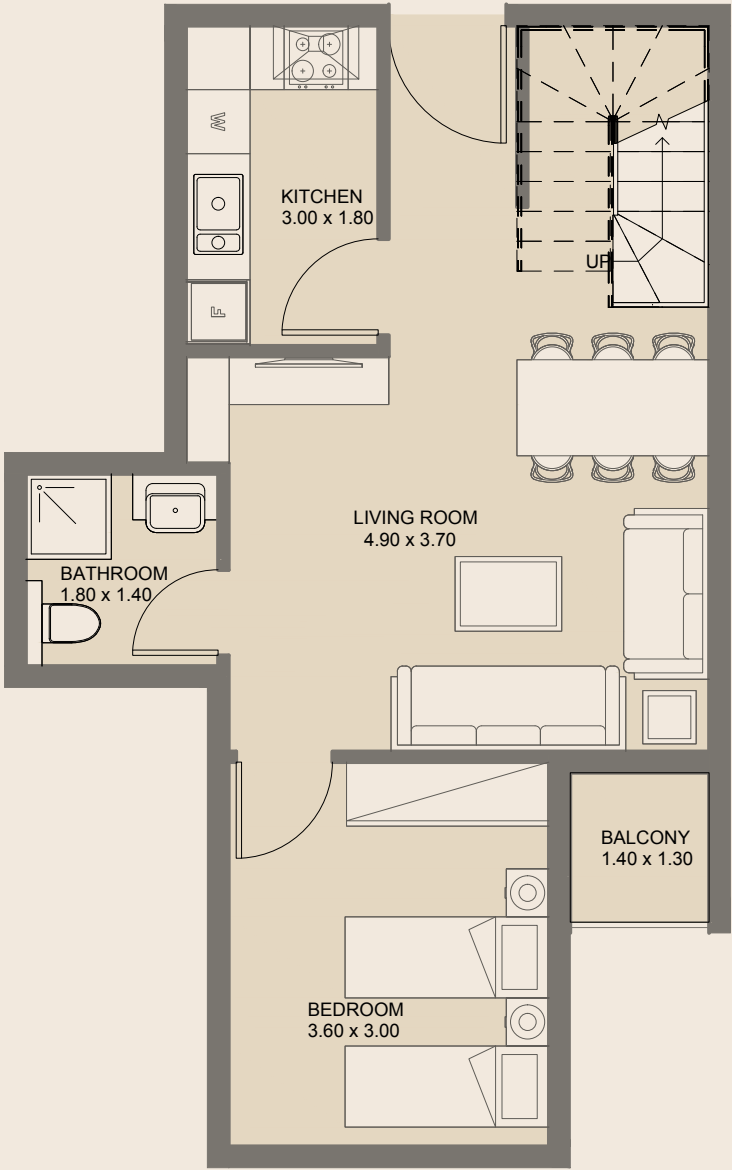
Terrace



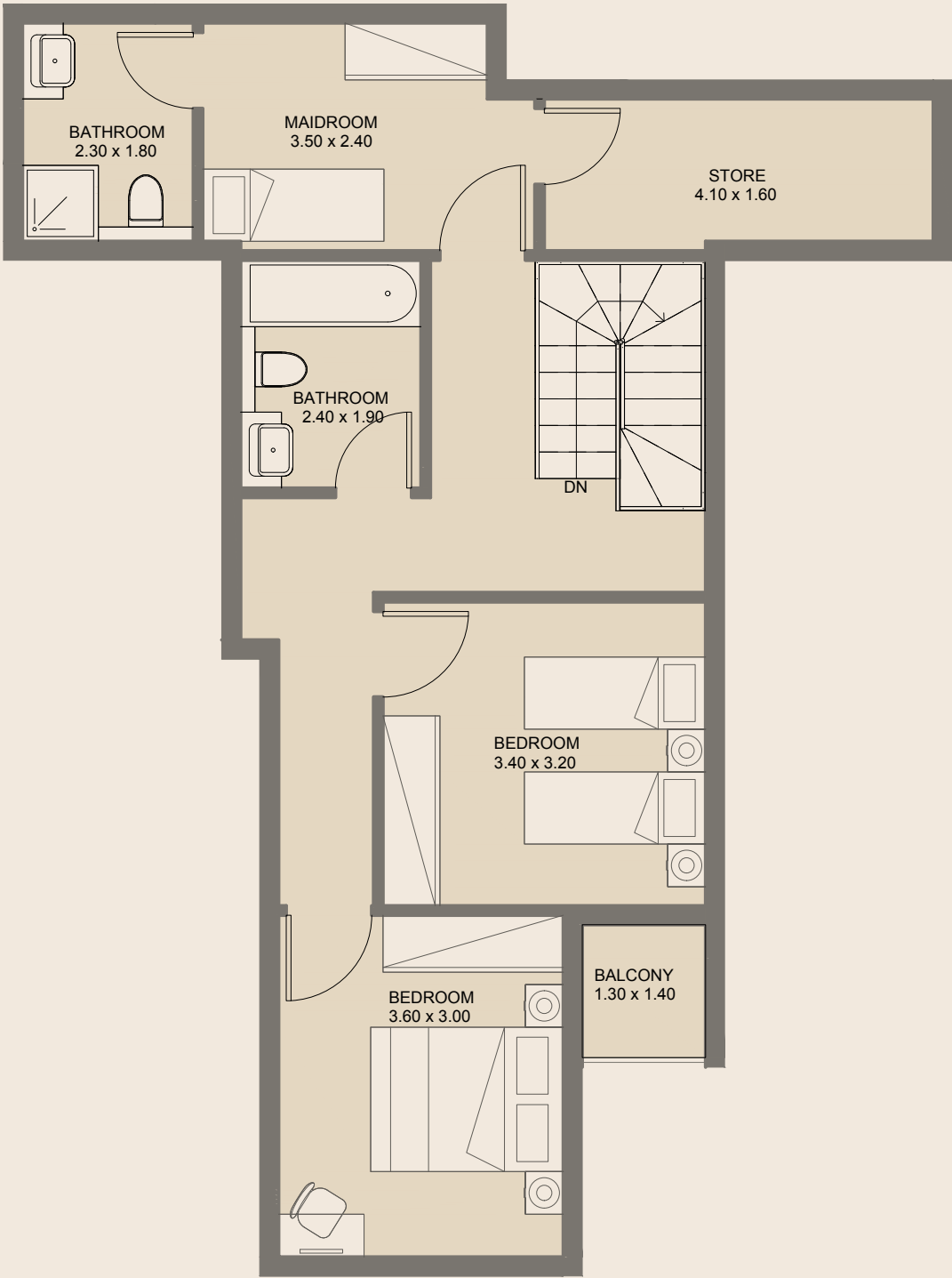
3BR - Duplex | Type I

5th & 6th Floors

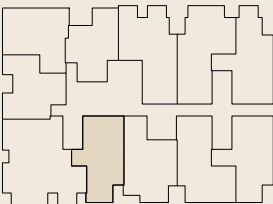
Internal Area	127.15 sq.m
External Area	70.15 sq.m
Total Area	197.29 sq.m



Lower Floor



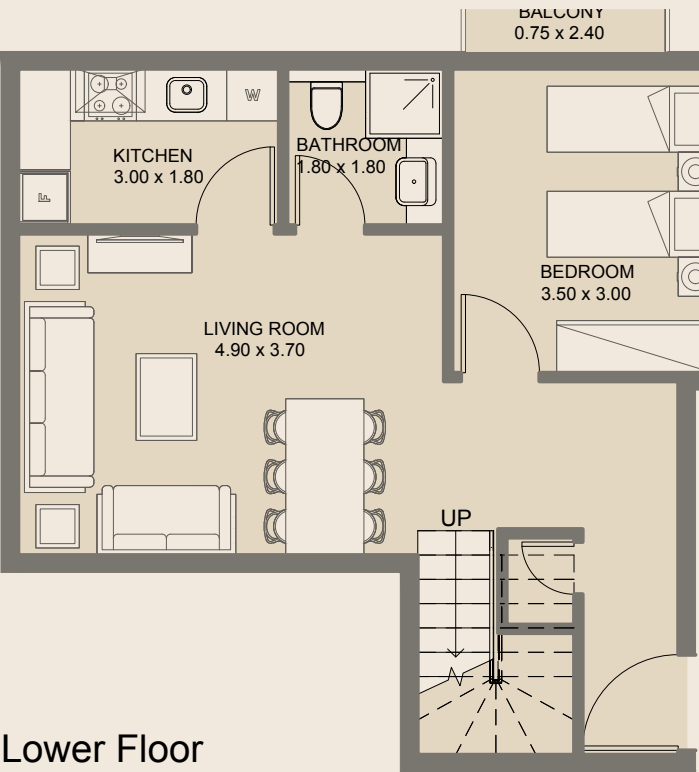
Upper Floor



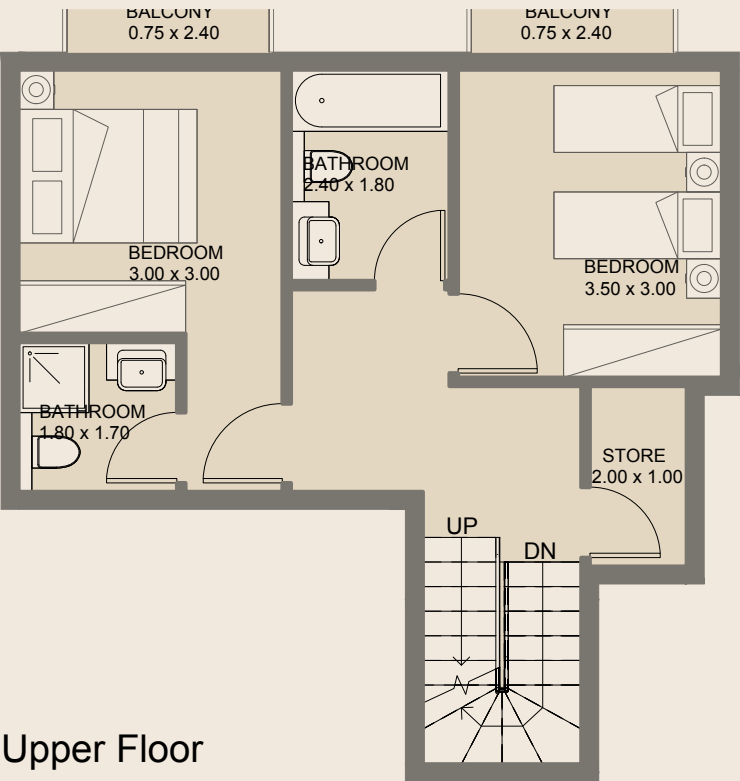
3BR - Duplex | Type J

5th & 6th Floors

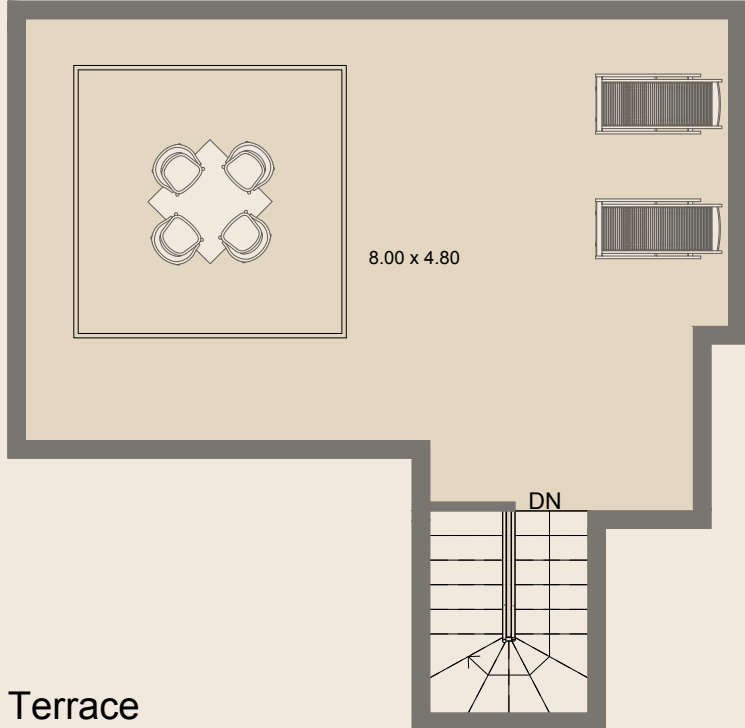
Internal Area	131.08 sq.m
External Area	4.37 sq.m
Total Area	135.44 sq.m



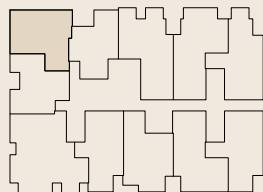
Lower Floor



Upper Floor



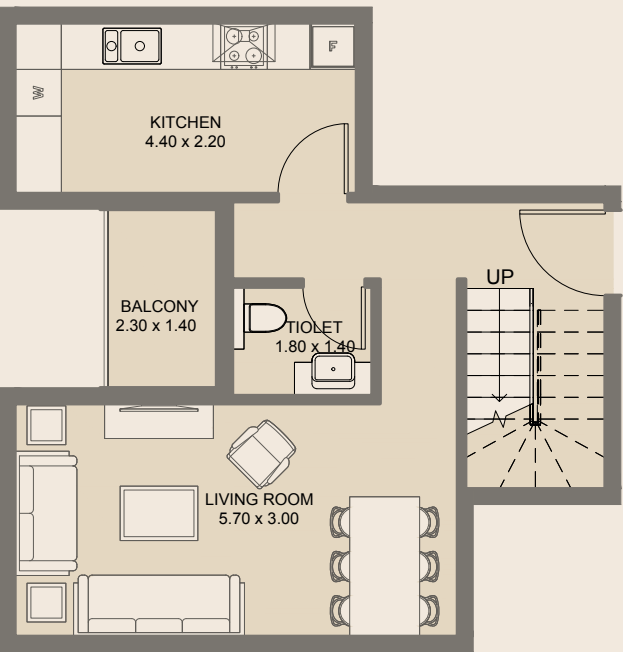
Terrace



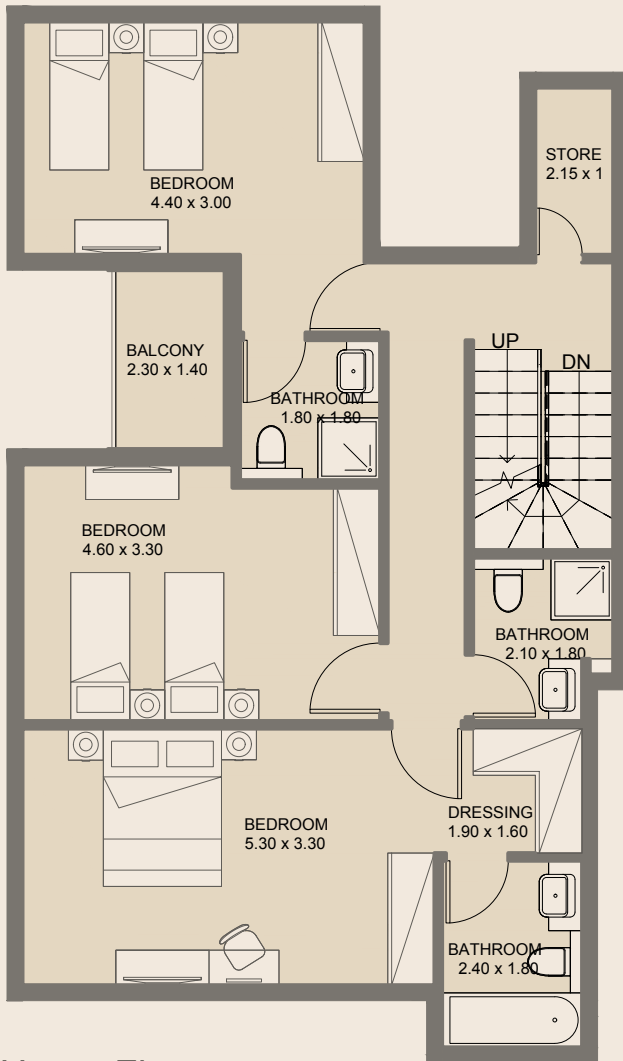
3BR - Duplex | Type K

5th & 6th Floors

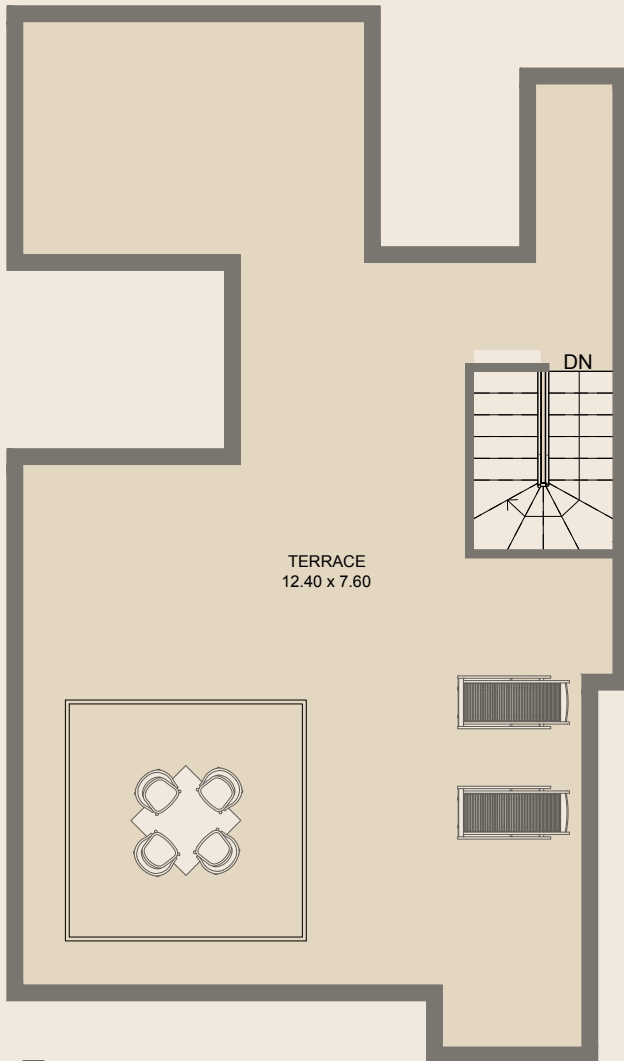
Internal Area	112.74 sq.m
External Area	58.33 sq.m
Total Area	171.07 sq.m



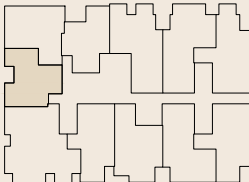
Lower Floor



Upper Floor



Terrace



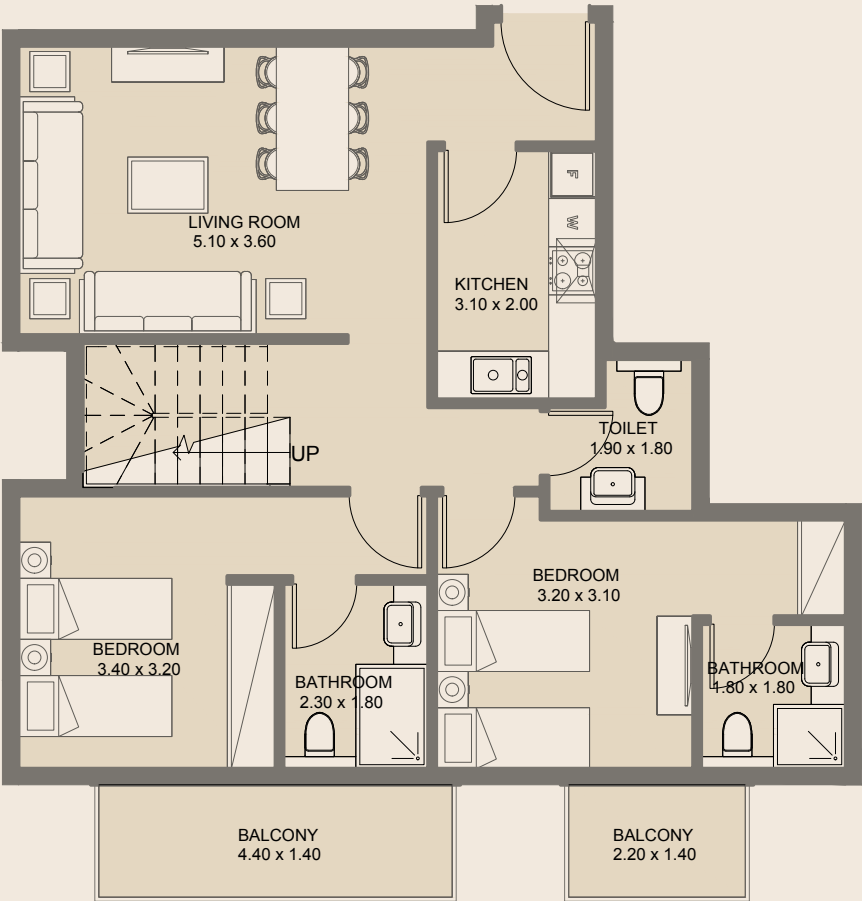
3BR - Duplex | Type L

5th & 6th Floors

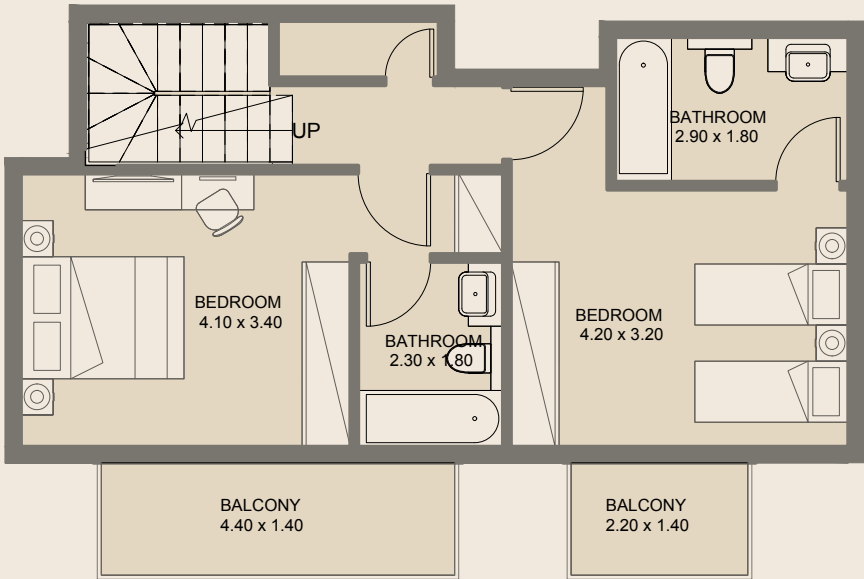
Internal Area	142.71 sq.m
External Area	101.78 sq.m
Total Area	244.49 sq.m

All drawings and dimensions are approximate. Drawings are not to scale and are subject to change without notice. The developer reserves the right to make revisions. The units are measured at typical floors in the building and columns may vary in size depending on the floor level. The furnishing and accessories shown are for representation only. The availability, length and width of the balcony varies depending on which floor and which orientation the unit is located within the building. There will be slight differences in the internal areas between the same unit types depending on the shaft sizes that go through the units.

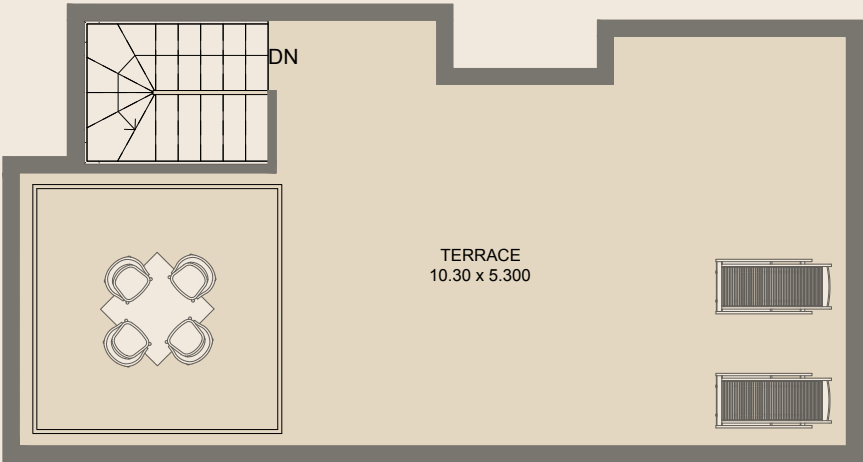
All drawings and dimensions are approximate. Drawings are not to scale and are subject to change without notice. The developer reserves the right to make revisions. The units are measured at typical floors in the building and columns may vary in size depending on the floor level. The furnishing and accessories shown are for representation only. The availability, length and width of the balcony varies depending on which floor and which orientation the unit is located within the building. There will be slight differences in the internal areas between the same unit types depending on the shaft sizes that go through the units.



Lower Floor



Upper Floor

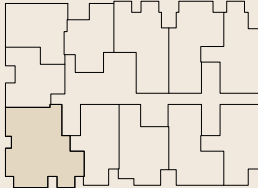


Terrace

4BR - Duplex | Type A

5th & 6th Floors

Internal Area	149.9 sq.m
External Area	82.65 sq.m
Total Area	232.56 sq.m



Egypt
The WaterWay, Mohammed Naguib, B1 Office BF06,
New Cairo, Egypt

Abu Dhabi
Marina Square, Tamouh Tower 27th Floor,
P. O. Box 111949 Al Reem Island, Abu Dhabi, UAE

Dubai
Office 301, 3rd floor, Oberoi Center, Al-A'amal St, Business Bay,
P. O. Box 27446, Dubai- UAE

Tel: 800 77 552
Email: info@reportageuae.com

مصر،
ذا واتر واي، محمد نجيب، B1، مكتب BF06
القاهرة الجديدة، مصر

ابو ظبي
مارينا سكوير، برج الطموح، طابق رقم 27
P. O. Box 111949 جزيرة الريم، ابوظبي الامارات العربية المتحدة

دبي
مكتب رقم 301، الطابق الثالث، أوبروي سنتر، شارع الامل الخليج التجاري
P. O. Box 27446 دبي، الامارات العربية المتحدة

Tel: 800 77 552
Email: info@reportageuae.com

NANT MONTENAPOLEONE VIN